

**UNIVERSITY
OF TORONTO**



2005

**Facts &
Figures**

Facts and Figures is prepared annually by the Office of the Vice-Provost, Planning and Budget. **Facts and Figures** provides answers to some of the most frequently asked questions about the University. It is designed and organized to serve as a useful and reliable source of reference information from year to year.

The reader of **Facts and Figures** should take care when attempting to use the enclosed information comparatively. While some definitions are common to other universities, many others are not. Our Office maintains some comparative databases and has access to some others. Please contact us for assistance in using **Facts and Figures** comparatively.

Each year we try to improve **Facts and Figures** to make it as useful as possible. We are always grateful for suggestions for improvement.

Facts and Figures can also be accessed on the World Wide Web at www.library.utoronto.ca/facts/

Other Official Publications of the University:

- **Performance Indicators for Governance Report**

(<http://www.provost.utoronto.ca/English/Performance-Indicators-for-Governance.html>)

- **Report from U of T** (<http://www.president.utoronto.ca/reportuoft.htm>)

- **University of Toronto Condensed Financial Report**

(<http://www.finance.utoronto.ca/English/Condensed-Financial-Statements.html>)

Corinne Pask-Aubé is the manager of **Facts and Figures** for 2005. She deserves our gratitude for her efforts. She can be reached through e-mail at corinne.pask@utoronto.ca.

We would also like to thank the contributors for their help in collecting data for each of the sections: Helen Lasthiotakis, Helen Choy, Judy McKenna, Aytan Farrokhyar, José Sigouin, Meredith Strong, Marlene Katzman, Brian Dowling, Susana Gajic, Hung Sun Chan, Barry Murphy, Michelle Broderick, Phil Harper, Lan Tran, Solange Silverberg, Brian Armstrong, Arlene Clement, Rick Haywood, Maureen Lynham, and Alex Nishri.

Safwat Zaky
Vice-Provost, Planning and Budget
Room 240, Simcoe Hall
27 King's College Circle
Toronto, Ontario
M5S 1A1
www.utoronto.ca/planning

CONTENTS

Part A	General	3
	1. Organization of Senior Administration	
	2. Major Academic Divisions	
	3. Degrees, Diplomas and Certificates Offered	
Part B	Finances	15
	University of Toronto Financial Statements	
	1. Statement of Operations	
	2. Changes in Surplus/Deficit	
	3. Operating Fund Expense Summary	
	4. Operating Fund: Academic Expense Summary	
	5. Restricted Funds	
	University of Toronto Budget Reports	
	6. Expense Budget Summary	
	7. Academic Costs	
Part C	Research	25
	1. Research Population	
	2. Revenue from Externally Sponsored Research	
	3. Academic Linkages with International Institutions	
	4. Technology Transfer Activities:	
	a) Invention Disclosures	
	b) Spin-off Companies	
	c) Industrial Contracts & Grants	
	d) Government Funding Leveraged by Industrial Collaboration	
Part D	Students	31
	1. Enrolment by Campus and Faculty/College	
	2. Enrolment by Age and Gender Balance	
	3. International Student Enrolment by Geographic Origin	
	4. International Students by Geographic Origin: 5 Year Trend	
	5. Ten Year Enrolment Trends, All Students	
	6. Gender Balance of Graduate and Undergraduate Enrolments by Field of Study	
	7. Undergraduate Intake by Faculty	
	8. Graduate Intake by Faculty	
	9. Total Intake	
	10. Degrees Awarded by Gender	
	11. Tuition Fees:	
	a) Domestic and International Students	
	b) Self-Funded Programs	
Part E	Graduates	51
	1. Graduates by Region	
	2. Number of Degree Affiliations by College or Faculty	
	3. Total Annual Gifts Received	
	4. Total Annual Gifts Received: Source of Donations	

CONTENTS (continued)

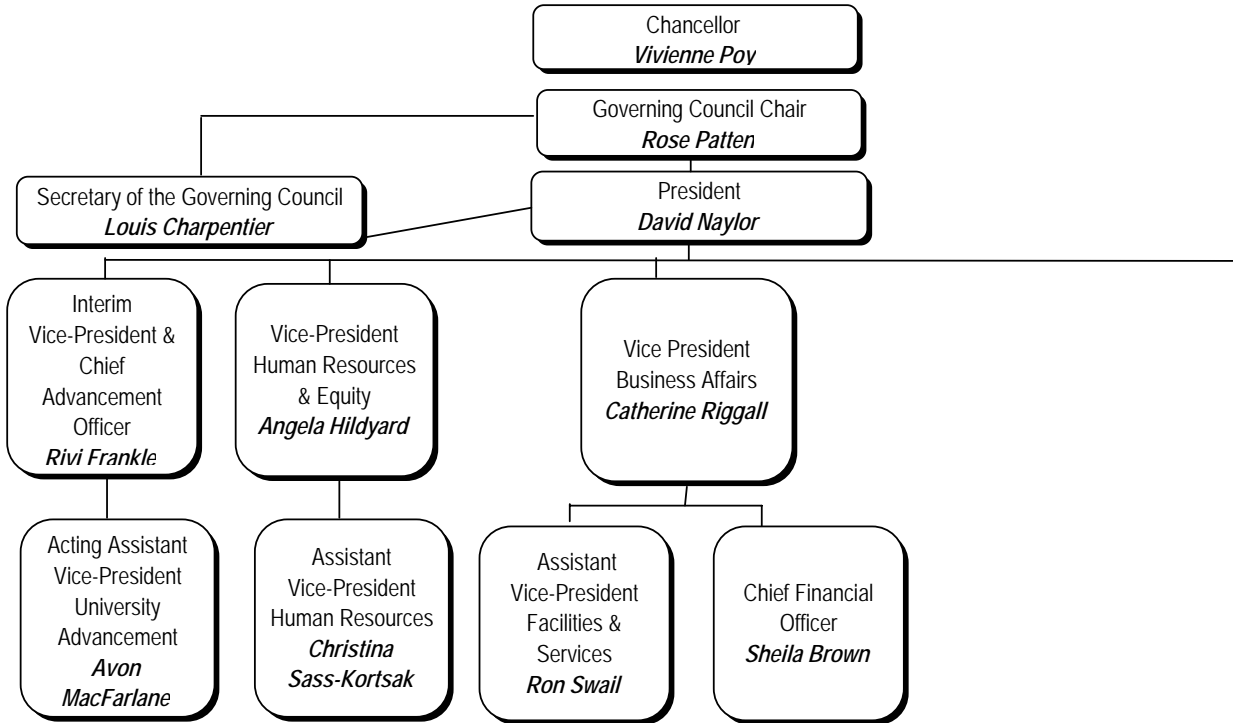
Part F	Student Awards	57
	1. Graduate Student Support by Source	
	2. Graduate Student Support by S.G.S. Division	
	3. Undergraduate Student Support : Admission Scholarships, In-Course Scholarships and Bursaries by Faculty and College	
	4. OSAP and University of Toronto Advanced Planning for Students program (UTAPS) by Faculty and College	
Part G	Faculty and Administrative Staff	63
	1. Distribution of Full-Time Appointed Tenured/Tenure Stream Faculty by Major Division and Main Appointment	
	2. Distribution of Full-Time Tenured/Tenure Stream Faculty by Rank and Gender	
	3. Age Distribution of Tenured/Tenure Stream Faculty	
	4. Distribution of Full and Part-Time (>=25%) Academic Staff and Librarians by Rank and Gender	
	5. Distribution of Full and Part-Time Administrative and Union Staff	
	6. Operating Fund Full-Time Equivalent Staff	
Part H	Library	71
	1. Library Collections	
	2. Number of Loans	
	3. Number of Computers in the Library	
	4. Digital Library E-Resources	
	5. Number of Electronic Articles Downloaded	
Part I	Physical Plant	75
	1. Usage of Assignable Space	
	2. Number of Buildings and Gross Square Metres	
	3. Area of U of T Properties	
	4. Number of Parking Spaces	
	5. Public Assembly Facilities	
	6. Number of Places in Student Residences	
Part J	Computing and Communications	81
	1. Number of UTORmail Accounts at Year End	
	2. Number of Messages Delivered by UTORmail Post Office	
	3. Number of Web Transactions	
	4. Institutional Internet Dial-in Service	
	a) Dial-in Modem	
	b) U of T/Bell Sympatico High Speed Edition (HSE)	
	c) Virtual Private Network (VPN)	
	5. Campus Wireless Network	
	6. Usage of Electronic Student Services	

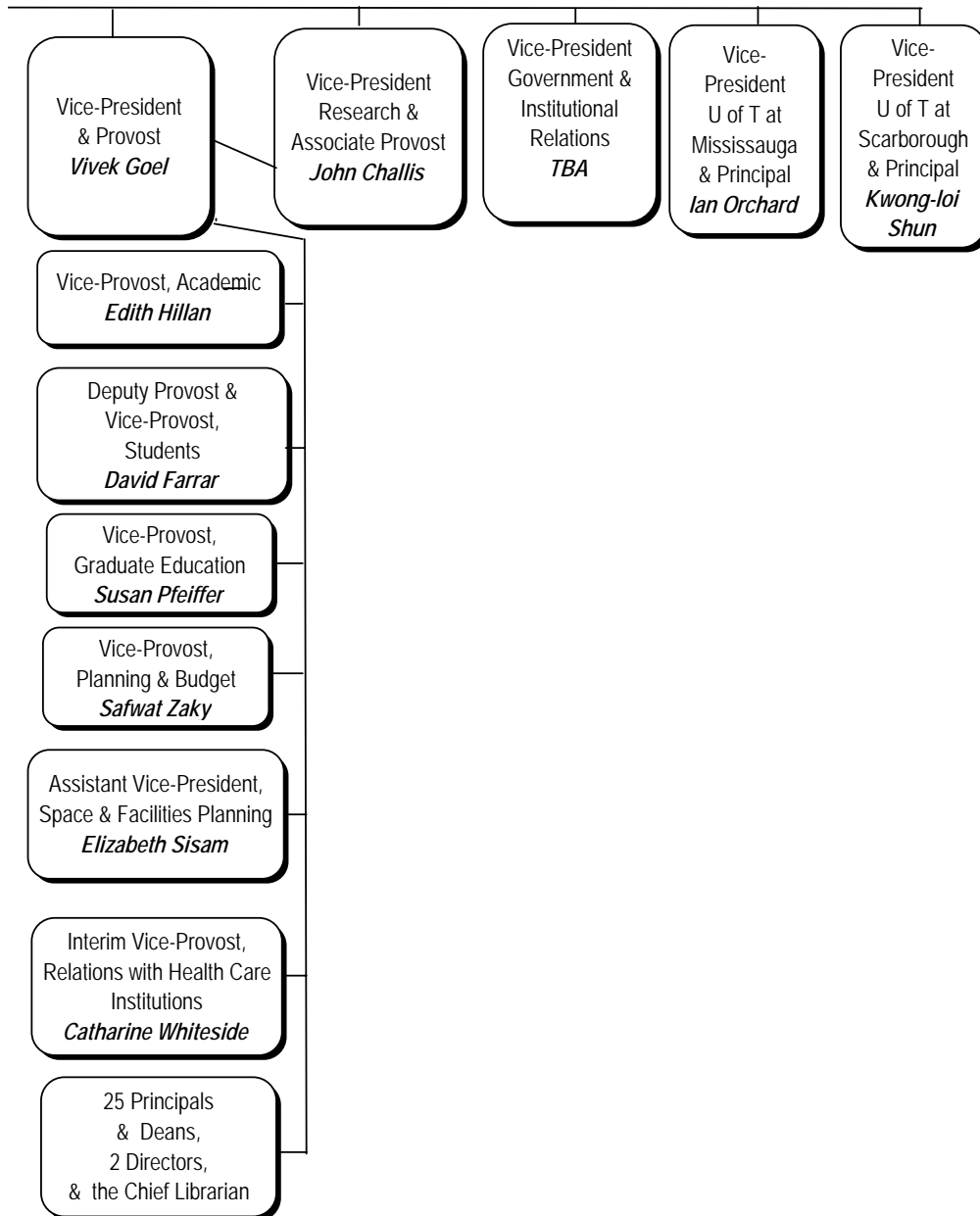
Part A

General

Organization of Senior Administration	4
Major Academic Divisions	6
Degrees, Diplomas and Certificates Offered	10

ORGANIZATION OF SENIOR ADMINISTRATION
2005-2006





MAJOR ACADEMIC DIVISIONS

2005-2006

Faculty of Applied Science and Engineering

Aerospace Studies, Institute for
Chemical Engineering and Applied Chemistry, Department of
Civil Engineering, Department of
Edward S. Rogers Sr. Electrical and Computer Engineering,
Department of
Engineering Science, Division of
Environmental Engineering, Division of
Materials Science and Engineering, Department of
Mechanical and Industrial Engineering, Department of

Faculty of Architecture, Landscape, and Design

Faculty of Arts and Science (St. George Campus)

Anthropology, Department of
Astronomy & Astrophysics, Department of
Botany, Department of
Chemistry, Department of
Classics, Department of
Commerce & Finance Program, Department of
Comparative Literature, Centre for
Computer Science, Department of
East Asian Studies, Department of
Economics, Department of
English, Department of
Environment, Centre for
Fine Art, Department of
French, Department of
Geography, Department of
Geology, Department of
Germanic Languages & Literatures, Department of
History, Department of
History & Philosophy of Science & Technology, Institute for
Human Biology Division
Italian Studies, Department of
Linguistics, Department of
Mathematics, Department of
Medieval Studies Centre
Near & Middle Eastern Civilizations, Department of
Philosophy, Department of
Physics, Department of
Political Science, Department of
Psychology, Department of
Religion, Department/Centre for the Study of
Slavic Languages & Literatures, Department of
Sociology, Department of
Spanish & Portuguese, Department of
Statistics, Department of
Theoretical Astrophysics, Canadian Institute for
United States, Centre for the Study of
Women and Gender Studies, Institute for
Zoology, Department of

MAJOR ACADEMIC DIVISIONS (continued)

2005-2006

Faculty of Arts and Science - Colleges (St. George Campus)

Constituent Colleges:

- Innis College
- New College
- University College
- Woodsworth College

Federated Colleges:

- St. Michael's College
- Trinity College
- Victoria College

School of Continuing Studies

Faculty of Dentistry

Faculty of Forestry

School of Graduate Studies

- Division I - Humanities
- Division II - Social Sciences
- Division III - Physical Sciences
- Division IV - Life Sciences

Faculty of Information Studies

Faculty of Law

Joseph L. Rotman School of Management

Faculty of Medicine

- Anesthesia, Department of
- Banting and Best Department of Medical Research
- Biochemistry, Department of
- Family and Community Medicine, Department of
- Health Policy, Management and Evaluation, Department of
- Immunology, Department of
- Laboratory Medicine and Pathobiology, Department of
- Medical Biophysics, Department of
- Medical Genetics and Microbiology, Department of
- Medical Imaging, Department of
- Medical Science, Institute of
- Medicine, Department of
- Nutritional Sciences, Department of
- Obstetrics and Gynaecology, Department of
- Occupational Science and Occupational Therapy, Department of
- Ophthalmology and Vision Sciences, Department of
- Otolaryngology - Head and Neck Surgery, Department of
- Paediatrics, Department of
- Pharmacology, Department of
- Physical Therapy, Department of
- Physiology, Department of
- Psychiatry, Department of

MAJOR ACADEMIC DIVISIONS (continued)

2005-2006

Faculty of Medicine (continued)

Public Health Sciences, Department of
Radiation Oncology, Department of
Rehabilitation Science, Department of
Speech-Language Pathology, Department of
Surgery, Department of

Multi-Faculty Centres and Institutes

Biomaterials and Biomedical Engineering, Institute of
Drug Research, Institute for
European, Russian and Eurasian Studies, Centre for
Asian Institute at the University of Toronto
Criminology, Centre of
Drama, Centre for the Study of
European Studies, Institute of
Industrial Relations and Human Resources, Centre for
International Relations, Centre for
International Studies, Munk Centre for
Knowledge Media Design Institute
Life Course and Aging, Institute for
Museum Studies Program
Policy Analysis, Institute for
South Asian Studies, Centre for
Urban and Community Studies, Centre for

Faculty of Music

Faculty of Nursing

Ontario Institute for Studies in Education (OISE/UT)

Adult Education and Counselling Psychology, Department of
Child Study, Institute of
Curriculum, Teaching and Learning, Department of
Human Development and Applied Psychology, Department of
Sociology and Equity Studies in Education, Department of
Theory and Policy Studies in Education, Department of

Leslie L. Dan Faculty of Pharmacy

Faculty of Physical Education and Health

Faculty of Social Work

Transitional Year Program

MAJOR ACADEMIC DIVISIONS (continued)

2005-2006

University of Toronto at Mississauga

Anthropology, Department of
Biology, Department of
Chemical and Physical Sciences, Department of
Communication and Culture, Insititute of
Economics, Department of
English and Drama, Department of
French, German and Italian, Department of
Geography, Department of
Historical Studies, Department of
Philosophy, Department of
Management, Department of
Mathematical and Computational Sciences, Department of
Political Science, Department of
Psychology, Department of
Sociology, Department of

University of Toronto at Scarborough

Computer & Mathematical Sciences, Department of
Humanities, Department of
Life Sciences, Department of
Management, Department of
Physical & Environmental Sciences, Department of
Social Sciences, Department of

Woodsworth College

DEGREES, DIPLOMAS AND CERTIFICATES OFFERED

2004-2005

UNDERGRADUATE AND FIRST PROFESSIONAL DEGREES

Faculty of Applied Science and Engineering:

Bachelor of Applied Science B.A.Sc.

Faculty of Arts and Science

St. George Campus:

Honours Bachelor of Arts Hon.B.A.

Honours Bachelor of Science Hon.B.Sc.

Bachelor of Commerce B.Com.

University of Toronto at Mississauga:

Honours Bachelor of Arts Hon.B.A.

Honours Bachelor of Science Hon.B.Sc.

Bachelor of Commerce B.Com.

University of Toronto at Scarborough:

Honours Bachelor of Arts Hon.B.A.

Honours Bachelor of Science Hon.B.Sc.

Bachelor of Business Administration B.B.A.

Faculty of Dentistry:

Doctor of Dental Surgery D.D.S.

Faculty of Law:

Juris Doctor J.D.

Juris Doctor and Certificate in Environmental Studies J.D. (and a certificate in Env. Studies)

Faculty of Medicine:

Doctor of Medicine M.D.

Bachelor of Science, Medical Radiation Sciences B.Sc.Med.Rad.Sc.

Faculty of Music:

Bachelor of Music Mus.Bac.

Bachelor of Music in Performance Mus Bac.Perf.

Faculty of Nursing:

Bachelor of Science in Nursing B.Sc.N.

OISE/UT:

Bachelor of Education B.Ed.

Leslie L. Dan Faculty of Pharmacy:

Doctor of Pharmacy Pharm.D.

Bachelor of Science in Pharmacy B.Sc.Phm.

Faculty of Physical Education and Health:

Bachelor of Physical and Health Education B.P.H.E.

DEGREES, DIPLOMAS AND CERTIFICATES OFFERED (continued)

2004-2005

UNDERGRADUATE AND FIRST PROFESSIONAL DIPLOMAS AND CERTIFICATES**Faculty of Dentistry:**

Certificate of Qualification in Dentistry Cert.Q.P.Dent.

Faculty of Music:

Artist Diploma Art.Dip.Mus.

Faculty of Nursing:Certificate as a Nurse Practitioner
(Primary Health Care) Cert.N.P.(PHC)**OISE/UT:**

Diploma in Technological Education Dip.T.Ed.

University of Toronto at Scarborough:

Certificate in Business Cert.Bus.

Woodsworth College:

Certificate in Human Resource Management C.H.R.M.

Certificate in Teaching English as a Second Language C.T.E.S.L.

GRADUATE DEGREES**School of Graduate Studies:**

Executive Master of Business Administration E.M.B.A.

Juris Doctor and Doctor of Philosophy (Economics,
Philosophy, Political Science) combined programs J.D./Ph.D.Juris Doctor and Master of Arts (Criminology,
Economics, Russian and East European Studies)
combined programs J.D./M.A.Juris Doctor and Master of Business Administration
combined program J.D./M.B.A.Juris Doctor and Master of Information Studies
combined program J.D./M.I.St.Juris Doctor and Master of Social Work combined
program J.D./M.S.W.Doctor of Dentistry and Doctor of Philosophy combined
program D.D.S./Ph.D.

Doctor of Education Ed.D.

Doctor of Juridical Science S.J.D.

Doctor of Medicine and Doctor of Philosophy combined
program M.D./Ph.D.

Doctor of Music Mus.Doc.

Doctor of Philosophy Ph.D.

Master of Applied Science M.A.Sc.

Master of Architecture M.Arch.

Master of Arts M.A.

Master of Biotechnology M.Biotech

Master of Business Administration M.B.A.

Master of Business Administration and Master of Arts
in Russian and East European Studies combined
program M.B.A./M.A.(REES)Master of Business Administration and Master of
Nursing combined program M.N./M.B.A.Master of Business Administration and Jeffrey Skoll
Bachelor of Applied Science combined program B.A.Sc./M.B.A.

DEGREES, DIPLOMAS AND CERTIFICATES OFFERED (continued)

2004-2005

School of Graduate Studies (continued):

Master of Education	M.Ed.
Master of Engineering	M.Eng.
Master of Engineering in Advanced Design and Manufacturing	M.Eng.D.M.
Master of Engineering in Telecommunications	M.Eng.Tel.
Masters in Environmental Sciences	M.Env.Sc.
Master of Financial Economics	M.F.E.
Master of Forest Conservation	M.F.C.
Master of Health Science	M.H.Sc.
Master of Health Science in Health Administration and Master of Social Work	M.H.Sc./M.S.W.
Master of Industrial Relations and Human Resources	M.I.R.H.R.
Master of Information Studies	M.I.St.
Master of Landscape Architecture	M.L.A.
Master of Laws	LL.M.
Master of Management & Professional Accounting	M.M.P.A.
Master of Mathematical Finance	M.M.F.
Master of Museum Studies	M.M.St.
Master of Music	Mus.M.
Master of Nursing	M.N.
Master of Science	M.Sc.
Master of Science in Forestry	M.Sc.F.
Master of Science in Occupational Therapy	M.Sc.O.T.
Master of Spatial Analysis - joint program with Ryerson	M.S.A.
Master of Science in Planning	M.Sc.Pl.
Master of Science in Physical Therapy	M.Sc.P.T.
Master of Science in Physical Therapy and Master of Science in Rehabilitation Science combined program	M.Sc.P.T./M.Sc.
Master of Social Work	M.S.W.
Master of Spacial Analysis	M.S.A.
Masters in Studies in Law	M.S.L.
Master of Teaching	M.T.
Master of Urban Design	M.U.D.
Master of Urban Design Studies	M.U.D.S.
Master of Visual Studies	M.V.S.

**GRADUATE DEGREES WITH ADVANCED SPECIALTY TRAINING,
GRADUATE DIPLOMAS AND GRADUATE CERTIFICATES**

Faculty of Applied Science and Engineering:

Professional Pilot and Aviation Management Diploma

Dip.P.P.A.M.

Faculty of Dentistry:

M.Sc. Advanced Dental Specialty Degree Program:

Dental Anaesthesia

Dental Public Health

Endodontics

Oral Pathology

Oral Pathology and Medicine

Oral Radiology

Oral and Maxillofacial Surgery and Anaesthesia

Orthodontics

Paediatric Dentistry

Periodontology

Prosthodontics

Faculty of Information Studies:

Graduate Diploma of Advanced Study in Information Studies

G.Dip.ISt

Faculty of Medicine:

Diploma in Child Psychiatry

D.Child Psych.

Diploma in Clinical Chemistry

D.Cl.Chem.

Diploma in Industrial Health

D.I.H.

Diploma in Ophthalmic Science

D.Oph.Sci.

Post-Doctoral training in Medical Microbiology

Faculty of Music:

Diploma in Operatic Performance

Dip.Op.Perf.

Advanced Certificate in Performance

Adv.Cert.Perf.

Faculty of Nursing:

Post Masters Nurse Practitioner Diploma

Dip.N.P.

Faculty of Social Work:

Diploma in Social Work Research

Res.Dip.S.W.

OISE

Diploma Program in Holocaust & Genocide Education

D.H.G.E.

Josph L. Rotman School of Management

Advanced Program in Human Resources Management

Advanced Program in Managing Strategic Change

Diploma in Investigative & Forensic Accounting

D.I.F.A.

Part B

Finances

University of Toronto Financial Statements	
Statement of Operations	16
Changes in Surplus/Deficit	18
Operating Fund Expense Summary	19
Operating Fund: Academic Expense Summary	20
Restricted Funds	21
University of Toronto Budget Reports	
Expense Budget Summary	22
Academic Costs	23

UNIVERSITY OF TORONTO FINANCIAL STATEMENTS 2004-05

STATEMENT OF OPERATIONS

for the year ended April 30, 2005

(with comparative figures for the year ended April 30, 2004)

(millions of dollars)

	OPERATING FUND	ANCILLARY OPERATIONS	CAPITAL FUND	RESTRICTED FUNDS	TOTAL 2005	TOTAL 2004
Revenues						
Government Grants - general operations	553.5				553.5	484.3
Student Fees	465.7	5.5	1.1		472.3	433.1
Government & other grants - restricted purposes		(1.3)	21.3	260.2	280.2	295.2
Sales, services and sundry income	75.4	118.4	1.0		194.8	170.2
Investment income (loss)						
Endowments	33.0			25.6	58.6	79.7
Other	11.4	1.0	0.5	11.3	24.2	44.2
Donations		1.3	7.9	38.8	48.0	39.4
Contract research	4.6			17.6	22.2	22.0
Total Revenues	1,143.6	124.9	31.8	353.5	1,653.8	1,568.1

UNIVERSITY OF TORONTO FINANCIAL STATEMENTS 2004-05

STATEMENT OF OPERATIONS (continued)

for the year ended April 30, 2005

(with comparative figures for the year ended April 30, 2004)

(millions of dollars)

	OPERATING FUND	ANCILLARY OPERATIONS	CAPITAL FUND	RESTRICTED FUNDS	TOTAL 2005	TOTAL 2004
Expenses						
Salaries and benefits	754.3	10.3		171.7	936.3	907.8
Materials and supplies	77.2	3.0		114.5	194.7	184.2
Scholarships, fellowships and bursaries	110.9				110.9	108.8
Amortization of capital assets	5.0	9.0	69.5		83.5	76.8
Cost of sales and services		77.6			77.6	70.7
Utilities	37.1	7.4			44.5	38.2
Repairs and maintenance	29.3	9.6	6.2	3.7	48.8	38.3
Travel and conferences	13.9			17.4	31.3	27.7
Interest	8.6	17.6	0.4		26.6	19.8
External contracted services	11.9			5.8	17.7	15.9
Telecommunications	8.4			1.2	9.6	10.2
Other	14.3		0.5	16.3	31.1	23.1
Total Expenses	1,070.9	134.5	76.6	330.6	1,612.6	1,521.5

UNIVERSITY OF TORONTO FINANCIAL STATEMENTS 2004-05

CHANGES IN SURPLUS/DEFICIT

for the year ended April 30, 2005

(with comparative figures for the year ended April 30, 2004)

(millions of dollars)

	OPERATING FUND	ANCILLARY OPERATIONS	CAPITAL FUND	RESTRICTED FUNDS	TOTAL 2005	TOTAL 2004
Net Income (loss)	72.7	(9.6)	(44.8)	22.9	41.2	46.6
Net transfers between funds	(36.2)	0.5	14.3	21.4		
Transfer of capital assets	(35.4)		35.4			
Change in internally restricted	(28.5)	(3.3)	16.3	(17.1)	(32.6)	20.4
Change in investments in capital assets		(44.2)	(34.3)		(78.5)	1.7
Transfers of donations to endowments				(18.0)	(18.0)	(16.0)
Transfer from internally restricted endowments				(9.2)	(9.2)	(33.2)
Net change in surplus (deficit) for the year	(27.4)	(56.6)	(13.1)	0.0	(97.1)	19.5
Deficit, beginning of the year	(10.5)	(16.4)	(20.8)		(47.7)	(67.2)
Deficit, end of year	(37.9)	(73.0)	(33.9)	0.0	(144.8)	(47.7)

UNIVERSITY OF TORONTO FINANCIAL STATEMENTS 2004-05

OPERATING FUND EXPENSE SUMMARY

Expense Summary for the year ended April 30, 2005

(with comparative totals for the year ended April 30, 2004)

(thousands of dollars)

	ACADEMIC SALARIES	OTHER SALARIES	STAFF BENEFITS	TOTAL SALARIES AND BENEFITS	SUPPLIES AND OTHER EXPENSES	SCHOLARSHIPS FELLOWSHIPS BURSARIES	TOTAL	ELIMINATIONS AND RECLASSIFICATIONS	TOTAL DIVISIONAL EXPENSE
Academic	\$331,461	\$141,306	\$95,163	\$567,930	\$149,788		\$717,719	(\$20,419)	\$697,300
Academic Services	9,076	26,645	6,986	42,708	35,128		77,835	(3,734)	74,102
Campus & Student Services		14,240	2,486	16,726	6,061		22,787	1,687	24,474
Student Assistance		3,136	370	3,506	555	110,905	114,967	70	115,037
Operation & Maintenance of Physical Plant		34,553	6,809	41,362	97,008		138,369	(47,204)	91,166
Administration		50,189	10,096	60,285	23,323		83,607	(11,017)	72,590
Interest								8,627	8,627
Renovations and Alterations Amortization					5,903		5,903	(3,089)	2,814
Other Expenditures		1,080	1,055	2,135	15,884		18,019	(2,875)	15,144
Sub-Total	340,537	271,148	122,966	734,652	333,650	110,905	1,179,207	(72,956)	1,106,251
Eliminations	(14,703)	(11,676)	46,024	19,646	(\$92,602)		(72,956)		
Total Expenses	\$325,835	\$259,472	\$168,991	\$754,297	\$241,048	\$110,905	\$1,106,251		1,106,251
2003-04 Comparatives	\$309,137	\$241,496	\$190,110	\$740,743	\$216,340	\$108,802	1,065,885		
Percentage Change	5.40%	7.44%	-11.11%	1.83%	11.42%	1.93%	3.79%		

Note: "Eliminations and Reclassifications" column represent external recovery of salaries and benefits as well as internal departmental changes between different functional groups.

UNIVERSITY OF TORONTO FINANCIAL STATEMENTS 2004-05**OPERATING FUND: ACADEMIC EXPENSE SUMMARY***For the year ending April 30, 2005*

(with comparative totals for the year ended April 30, 2004)

(thousands of dollars)

	NET EXPENSES 2004-05	NET EXPENSES 2003-04
Arts & Science, Colleges & Schools:		
Faculty of Arts & Science	\$178,005	\$167,581
Federated Colleges Block Grant	10,043	8,894
Graduate Centres & Institutes	8,057	7,519
Mississauga, University of Toronto at - Academic	46,920	41,065
Scarborough, University of Toronto at - Academic	42,714	40,365
School of Continuing Studies	9,891	8,494
School of Graduate Studies	4,404	4,225
Transitional Year Program	1,335	1,294
Health Science Faculties/Schools:		
Faculty of Dentistry	\$22,385	\$21,481
Faculty of Medicine	96,420	84,877
Faculty of Nursing	8,376	7,161
Faculty of Pharmacy	9,428	7,043
Faculty of Physical Education and Health	18,139	16,432
Other Professional Faculties:		
Faculty of Applied Science & Engineering	\$58,831	\$55,558
Faculty of Architecture, Landscape, and Design	5,225	4,735
Faculty of Forestry	2,428	2,413
Faculty of Information Studies	4,731	4,274
Faculty of Law	16,024	14,439
Management, Rotman School of	41,117	34,156
Faculty of Music	8,466	8,163
OISE/UT	47,493	48,778
Faculty of Social Work	4,756	4,681
University of Toronto Schools	8,181	6,197
Other Academic	\$43,931	\$61,134
Total Academic Expense	\$697,300	\$660,958

UNIVERSITY OF TORONTO FINANCIAL STATEMENTS 2004-05

RESTRICTED FUNDS

Endowments and Expendable Funds at Fair Value

for the year ending April 30, 2005 (with comparative figures for the year ended April 30, 2004)

(thousands of dollars)

	ENDOWMENT FUNDS		EXPENDABLE FUNDS	
	2005	2004	2005	2004
l'Anson Fund	\$2,661	\$2,940	\$106	\$0
Connaught Funds	85,397	83,784	6,574	5,564
Departmental Funds	146,868	138,496	122,049	117,967
Faculty Endowment Funds	434,753	390,748	10,720	8,347
Miscellaneous Funds	32,106	31,760	12,456	14,207
Ontario Student Opportunity Trust Funds Phase 1	311,344	301,633	19,709	19,286
Ontario Student Opportunity Trust Funds Phase 2	41,486	14,549	946	110
Research Funds	121,234	117,171	145,457	144,334
Student Aid Funds	246,909	206,569	23,516	22,756
Supplemental Retirement Arrangement	0	0	131,576	118,962
Total University of Toronto	\$1,422,758	\$1,287,650	\$473,109	\$451,533
Affiliated Universities	265,526	257,097	na	na
Total	\$1,688,284	\$1,544,747	na	na

UNIVERSITY OF TORONTO BUDGET REPORTS

EXPENSE BUDGET SUMMARY

Time Series Comparison of Major Budget Categories, based on net expense budgets

2003-04 to 2005-06

(Millions of dollars)

	2005-06	% INCREASE OVER PRIOR YEAR	2004-05	% INCREASE OVER PRIOR YEAR	2003-04
Academic	623.2	6%	587.7	12%	523.2
Academic Services	63.4	5%	60.6	4%	58.5
Campus & Student Services	1.6	13%	1.4	19%	1.2
Student Assistance	78.2	18%	66.5	6%	63.0
Facilities & Services	50.4	18%	42.8	15%	37.3
Utilities	34.7	4%	33.2	8%	30.7
Alterations, Renovations, Lease Costs	1.6	-1%	1.6	-4%	1.7
Administration	68.0	0%	67.9	13%	60.3
General University Expense	74.3	-5%	78.4	121%	35.5
Municipal Taxes	4.5	6%	4.2	18%	3.6
Total Expense Budget Summary	999.9	6%	944.4	16%	815.0
Administrative costs as % of Academic Costs	11%		12%		12%
Administrative Costs as % of Academic Costs & Academic Services Costs	10%		10%		10%
General University Costs as % of Academic Costs	12%		13%		7%

UNIVERSITY OF TORONTO BUDGET REPORTS

ACADEMIC COSTS

Time Series Comparison of Major Academic Costs, based on Net Expense Budgets

2003-04 to 2005-06

(Millions of dollars)

	2005-06	% OF BUDGET	% INCREASE OVER PRIOR YEAR	2004-05	% OF BUDGET	% INCREASE OVER PRIOR YEAR	2003-04	% OF BUDGET
Gross Expense Budget	915.4			845.6			777.6	
Recoveries	(147.7)			(128.6)			(127.9)	
Divisional Income	(144.5)			(129.2)			(126.5)	
Net Expense Budget	623.2		6%	587.7		12%	523.2	
Arts & Science, Colleges & Schools	264.2	42%	5%	252.5	43%	8%	234.2	45%
Health Sciences	103.7	17%	3%	100.3	17%	5%	95.1	18%
Other Professional Faculties	119.1	19%	5%	113.3	19%	6%	106.9	20%
Other Academic Costs	136.2	22%	12%	121.6	21%	40%	87.0	17%
Net Expense Budget	623.2	100%		587.7	100%		523.2	100%
Instructional Salaries	498.6	54%	9%	458.9	54%	9%	420.8	54%
Other Salaries & Wages	130.2	14%	8%	120.4	14%	2%	118.1	15%
Benefits	97.2	11%	12%	86.9	10%	5%	83.0	11%
Books & Equipment	8.4	1%	-13%	9.6	1%	8%	8.9	1%
Supplies & Services	150.4	16%	7%	140.1	17%	21%	115.6	15%
Student Awards	30.6	3%	3%	29.7	4%	-5%	31.2	4%
Gross Expense Budget	915.4	100%		845.6	100%		777.6	100%

Part C

Research

Research Population	26
Revenue from Externally Sponsored Research	27
Academic Linkages with International Institutions	28
Technology Transfer Activities:	
a) Invention Disclosures	29
b) Spin-off Companies	29
c) Industrial Contracts & Grants	30
d) Government Funding Leveraged by Industrial Collaboration	30

RESEARCH POPULATION

September 2005

	HUMANITIES	SOCIAL SCIENCES	PHYSICAL SCIENCES	LIFE SCIENCES	TOTAL
Full-Time Faculty	427	665	495	781	2,368
Part-Time Faculty	22	22	13	169	226
Status-Only Faculty	39	139	115	2,551	2,844
Full-Time Research Associates	5	12	112	101	230
Part-Time Research Associates	1	10	8	6	25
Post-Doctoral Fellows	31	24	353	1,038	1,446
Graduate Students	1,325	4,982	2,244	3,364	11,915

Notes:

1. Numbers shown here may differ from the full time faculty counts in other tables because of selection criteria for inclusion in the research population.
2. Faculty includes professorial ranks only.
3. Faculty members may have multiple appointments; only the main appointment was counted in the research population.
4. The figure for post-doctoral fellows includes those at the affiliated hospitals.

REVENUE FROM EXTERNALLY SPONSORED RESEARCH

(thousands of dollars)

	2002-2003	2003-2004	2004-2005
University of Toronto			
Grants & Contracts	\$269,229	\$292,681	\$324,178
Donations	1,562	1,305	1,420
Subtotal	270,791	293,986	325,598
Overhead	14,694	30,973	32,215
Total, University of Toronto	\$285,485	\$324,959	\$357,813
Affiliated Hospitals*	\$275,244	\$345,312	\$350,203 **
Grand Total	\$560,729	\$670,271	\$708,016 **

* Overhead included

** Estimate only, using previous year's revenue figure for the Affiliated Hospitals

ACADEMIC LINKS BETWEEN THE UNIVERSITY OF TORONTO AND INTERNATIONAL INSTITUTIONS

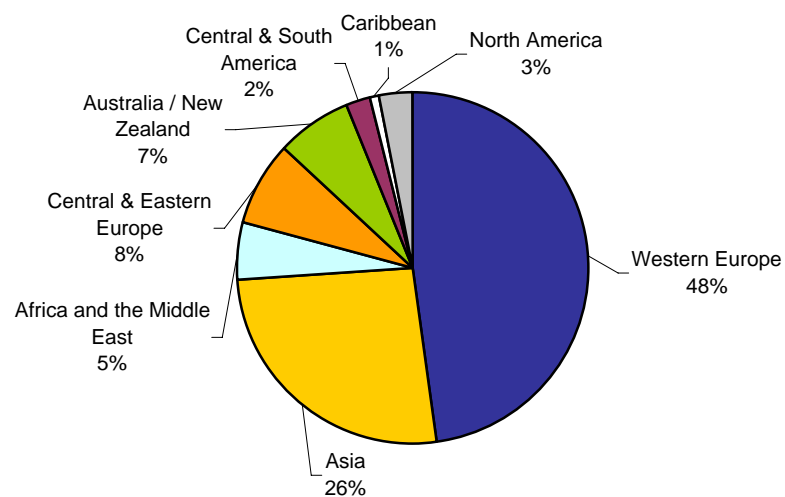
November 2005

REGION	NUMBER OF MOU'S*
Western Europe	62
Asia	34
Africa and the Middle East	7
Central & Eastern Europe	10
Australia / New Zealand	9
Central & South America	3
Caribbean	1
North America	4
Total	130

*Memoranda of Understanding (MOU's) are formal arrangements between institutions, which outline how they plan to cooperate over a specified period of time (normally, five years).

The areas included in MOU's are:

- joint research activities,
- participation in each institution's seminars and academic meetings,
- exchange of academic materials,
- short-term academic programs, and
- exchange of students.



TECHNOLOGY TRANSFER ACTIVITIES

INVENTION DISCLOSURES

	2002-2003	2003-2004	2004-2005
Number of Inventions Disclosed*	138	164	224
Gross Royalties			
Innovations Foundation	\$1,404,882	\$1,407,486	\$1,052,752
Other	\$1,550,177	\$1,707,892	\$722,207
Total Gross Royalties	\$2,955,059	\$3,115,378	\$1,774,959

* Excluding affiliated hospital inventions.

SPIN-OFF COMPANIES

	2002-2003	2003-2004	2004-2005
Number of Active companies	96	100	103
Number of Employees in Canada	3,638	3,638 **	3,028 ***
Reported Annual Revenue	\$821,000,000	\$821,000,000 **	\$725,100,000 ***

** New survey was not conducted for 2003-04 - 2002-03 data are shown.

*** Preliminary Figures

TECHNOLOGY TRANSFER ACTIVITIES (continued)

INDUSTRIAL CONTRACTS AND GRANTS*

(April 2003 - March 2004)

Contracts	\$31,001,039
Grants	\$35,322,464
Total industrial research funding	\$66,323,503

GOVERNMENT FUNDING LEVERAGED BY INDUSTRIAL COLLABORATION*

Networks of Centres of Excellence (April 2003 - March 2004)	UofT participated in 16 of 17	\$11,487,809
Ontario Centres of Excellence (April 2003 - March 2004)	UofT participated in 4 of 4	\$6,618,123
Ontario Research and Development Challenge Fund (April 2003 - March 2004)		\$32,280,170
Federal Granting Councils: (April 2004 - March 2005)		
NSERC	University/Industry Programs**	\$5,963,199
CIHR	University/Industry Programs**	\$1,085,021
Total government funding leveraged by industrial collaboration		\$57,434,323

* Includes the affiliated hospitals.

** Excludes the Networks of Centres of Excellence.

Part D

Students

Enrolment by Campus and Faculty/College	32
Enrolment by Age and Gender Balance	34
International Students Enrolment by Geographic Origin	35
International Students by Geographic Origin: 5 Year Trend	37
Ten Year Enrolment Trends, All Students	40
Gender Balance of Graduate and Undergraduate Enrolments by Field of Study	41
Undergraduate Intake by Faculty	42
Graduate Intake by Faculty	43
Total Intake	43
Degrees Awarded by Gender	44
Tuition Fees:	
a) Domestic and International Students	45
b) Self-Funded Programs	49

ENROLMENT BY CAMPUS AND FACULTY/COLLEGE

November 1, 2004

FACULTY/COLLEGE BY CAMPUS	UNDERGRADUATE			GRADUATE DEGREES/ GRADUATE DIPLOMAS			ALL STUDENTS		FTE STUDENTS		
	Full- Time	Part- Time	% Female	Full- Time	Part- Time	% Female	Total	% Female	Under- graduate	Graduate	Total
St. George Campus											
Applied Science & Engineering	3,964	111	24%	1,149	244	24%	5,468	24%	4,056	1,222	5,278
Architecture Landscape & Design	---	---	---	292	0	46%	292	46%	---	292	292
Arts & Science	22,243	3,686	59%	2,585	182	49%	28,696	58%	21,082	2,640	23,722
Dentistry	338	0	55%	109	3	45%	450	53%	338	110	448
Forestry	---	---	---	83	0	49%	83	49%	---	83	83
Graduate Centres & Institutes	---	---	---	252	42	66%	294	66%	---	265	265
Information Studies	---	---	---	232	122	58%	354	58%	---	269	269
Law	562	50	51%	100	12	52%	724	52%	601	104	705
Management	---	---	---	636	304	30%	940	30%	---	727	727
Medicine	3,264	3	49%	1,909	135	60%	5,311	53%	3,267	1,951	5,218
Music	421	23	58%	113	6	53%	563	57%	442	115	557
Nursing	310	10	93%	187	164	96%	671	94%	313	236	549
Occupational Therapy	---	---	---	143	0	94%	143	94%	---	143	143
OISE/UT	1,273	5	71%	1,189	897	76%	3,364	74%	1,278	1,458	2,736
Pharmacy	764	20	74%	97	21	57%	902	72%	816	103	919
Physical Education & Health	493	21	65%	37	5	64%	556	65%	485	39	523
Physical Therapy	0	1	100%	147	2	79%	150	79%	1	148	148
Social Work	---	---	---	261	68	87%	329	87%	---	281	281
Transitional Year Program	67	268	68%	---	---	---	335	68%	122	---	122
Woodsworth Certificate and Diploma Programs	43	129	78%	---	---	---	172	78%	79	---	79
Total St. George	33,742	4,327	56%	9,521	2,207	55%	49,797	56%	32,879	10,185	43,064

ENROLMENT BY CAMPUS AND FACULTY/COLLEGE (continued)

November 1, 2004

FACULTY/COLLEGE BY CAMPUS	UNDERGRADUATE			GRADUATE DEGREES/ GRADUATE DIPLOMAS			ALL STUDENTS		FTE STUDENTS		
	Full- Time	Part- Time	% Female	Full- Time	Part- Time	% Female	Total	% Female	Under- graduate	Graduate	Total
U of T at Mississauga											
Arts & Science	7,952	842	60%	133	0	59%	8,794	60%	7,295	133	7,428
Management at UTM (MMPA, DIFA)	---	---	---	98	56	49%	154	49%	---	115	115
Total U of T at Mississauga	7,952	842	60%	231	56	54%	9,081	59%	7,295	248	7,543
U of T at Scarborough											
Arts & Science	7,891	870	60%	46	1	53%	8,761	60%	7,228	46	7,274
Graduate, all other faculties	---	---	---	6	0	33%	6	33%	---	6	6
Total Scarborough	7,891	870	60%	52	1	51%	8,814	60%	7,228	52	7,280
Grand Total	49,585	6,039	57%	9,804	2,264	55%	67,692	57%	47,402	10,485	57,887

Note: Excludes 772 FTE students in the Toronto School of Theology.

Beginning 2004-05, students enrolled in Additional Qualification courses at OISE are excluded

	HEADCOUNT	FTE
First Entry Undergraduate	48,852	40,710
Doctoral Stream Graduate	7,455	7,106
Undergraduate and Graduate Professional	11,385	10,071
Total	67,692	57,887

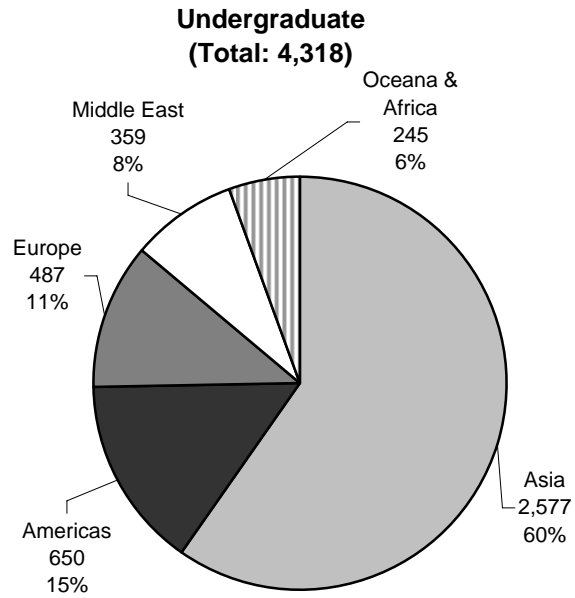
ENROLMENT BY AGE AND GENDER BALANCE

1994 vs. 2004

November 1

	1994			2004		
	Male	Female	Total	Male	Female	Total
Full-Time Undergraduate						
Number	13,974	15,488	29,462	21,381	28,204	49,585
Percent	47.4%	52.6%	100.0%	43.1%	56.9%	100.0%
Median Age	21.0	20.6	20.8	21.2	21.1	21.2
Full-Time Graduate						
Number	3,345	2,792	6,137	4,479	5,325	9,804
Percent	54.5%	45.5%	100.0%	46.2%	53.8%	100.0%
Median Age	27.3	26.8	27.1	28.3	28.0	28.2
Part-Time Undergraduate						
Number	4,954	7,936	12,890	2,602	3,437	6,039
Percent	38.4%	61.6%	100.0%	36.3%	63.7%	100.0%
Median Age	24.7	26.6	25.7	24.6	25.8	25.1
Part-Time Graduate						
Number	911	911	1,822	905	1,359	2,264
Percent	50.0%	50.0%	100.0%	36.1%	63.9%	100.0%
Median Age	30.7	31.6	31.1	33.7	34.7	34.3

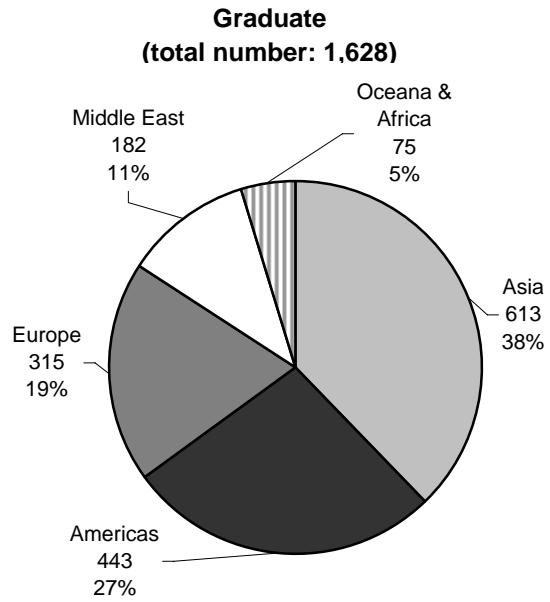
INTERNATIONAL STUDENTS BY GEOGRAPHIC ORIGIN
2004-2005



Top 3 Countries in each Region			
	Country	Count	% of Undergraduate
Americas	U.S.A	389	9.0%
	Trinidad & Tobago	49	1.1%
	Brazil	32	0.7%
Asia	China & Hong Kong	1,110	25.7%
	South Korea	439	10.2%
	Pakistan	227	5.3%
Europe	United Kingdom	100	2.3%
	England	68	1.6%
	Germany	40	0.9%
Middle East	Saudi Arabia	94	2.2%
	Israel	59	1.4%
	United Arab Emirates	37	0.9%
Oceania & Africa	Australia	72	1.7%
	Kenya	33	0.8%
	Nigeria	30	0.7%

Note: In 2004-05, the largest percentage of undergraduate international students were from China including Hong Kong (25.7%) followed by South Korea (10.2%).

INTERNATIONAL STUDENTS BY GEOGRAPHIC ORIGIN (continued)
2004-2005

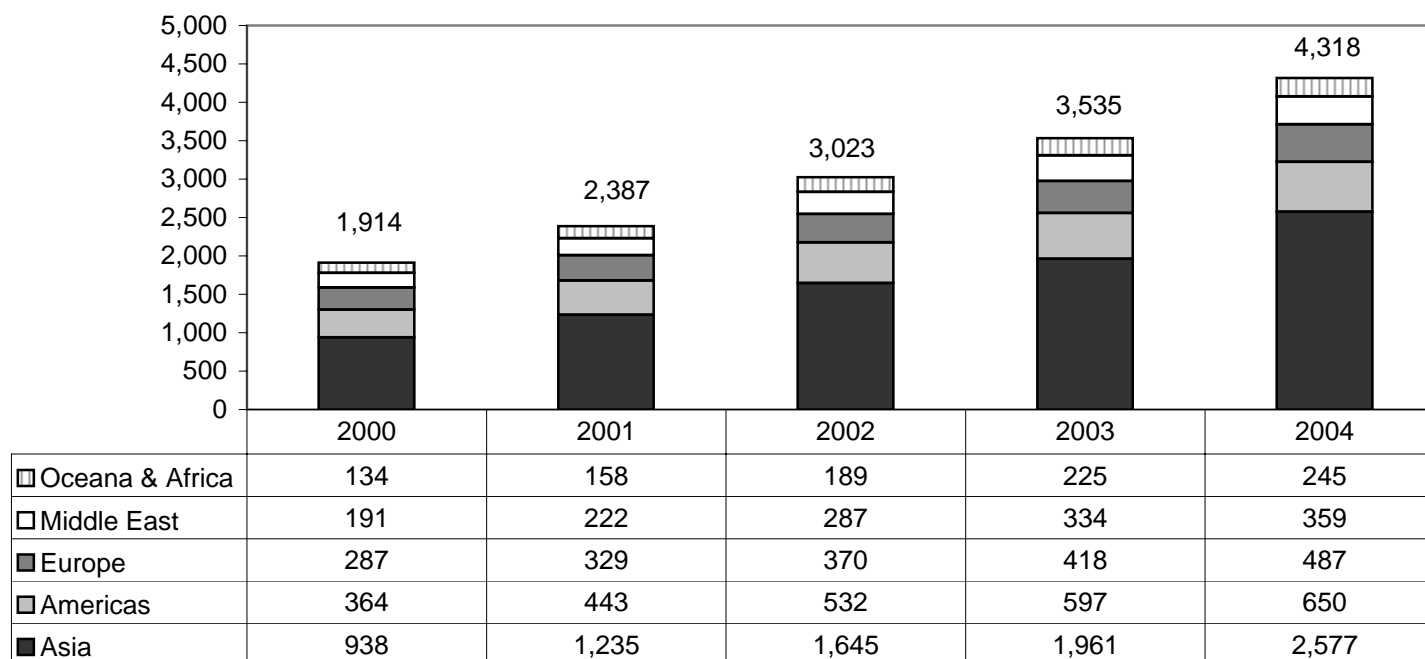


Top 3 Countries in each Region			
	Country	Count	% of Graduate
Americas	U.S.A.	283	17.4%
	Mexico	52	3.2%
	Argentina	18	1.1%
Asia	China & Hong Kong	327	20.1%
	India	91	5.6%
	Japan	43	2.6%
Europe	Germany	58	3.6%
	United Kingdom	35	2.1%
	Romania	29	1.8%
Middle East	Iran	79	4.9%
	Israel	38	2.3%
	Turkey	23	1.4%
Oceania & Africa	Australia	14	0.9%
	Nigeria	13	0.8%
	New Zealand	11	0.7%

Note: In 2004-05, the largest percentage of graduate international students were from China including Hong Kong (20.1%) followed by the USA (17.4%).

**International Students by Geographic Origin: 5-Year Trend
2000 to 2004**
as at November 1

Undergraduate Students

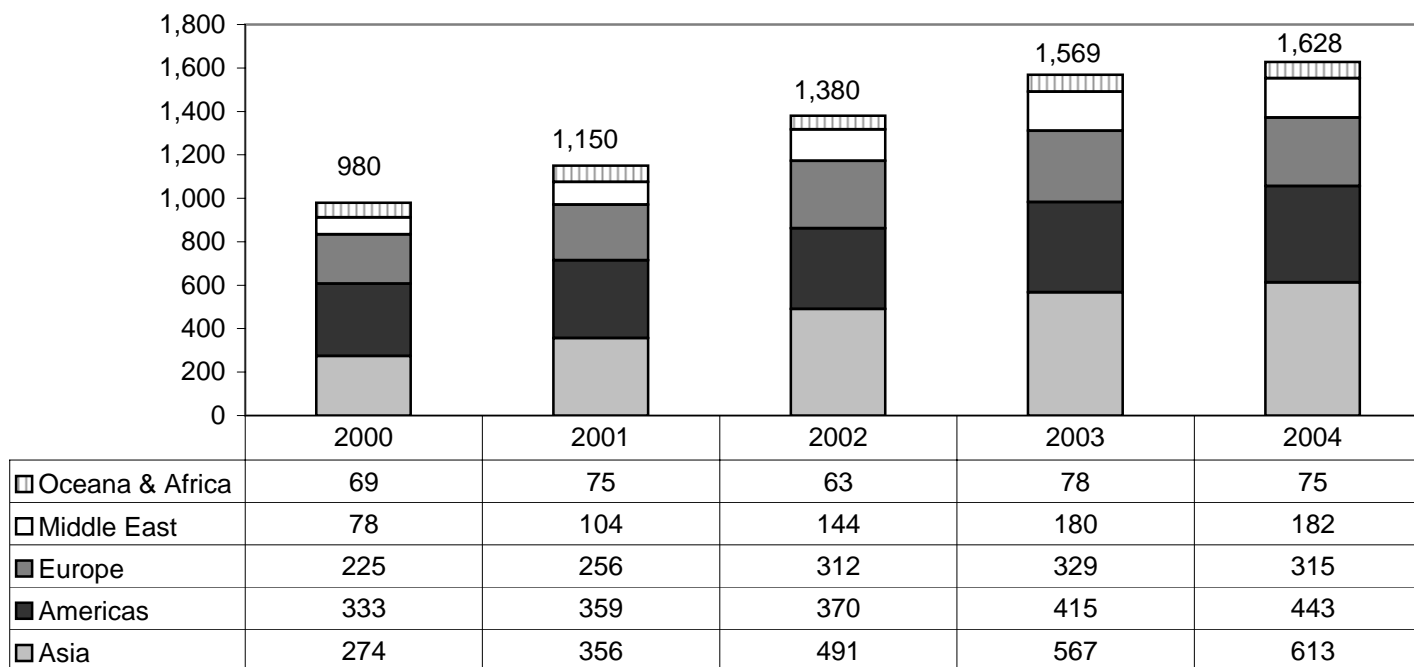


In 2000-01 the largest percentage of undergraduate international students were from China including Hong Kong (16.3%) followed by the USA (11.9%)

In 2004-05, the largest percentage of undergraduate international students were from China including Hong Kong (25.7%) followed by South Korea (10.2%).

International Students by Geographic Origin: 5-Year Trend (continued)
2000 to 2004
as at November 1

Graduate Students

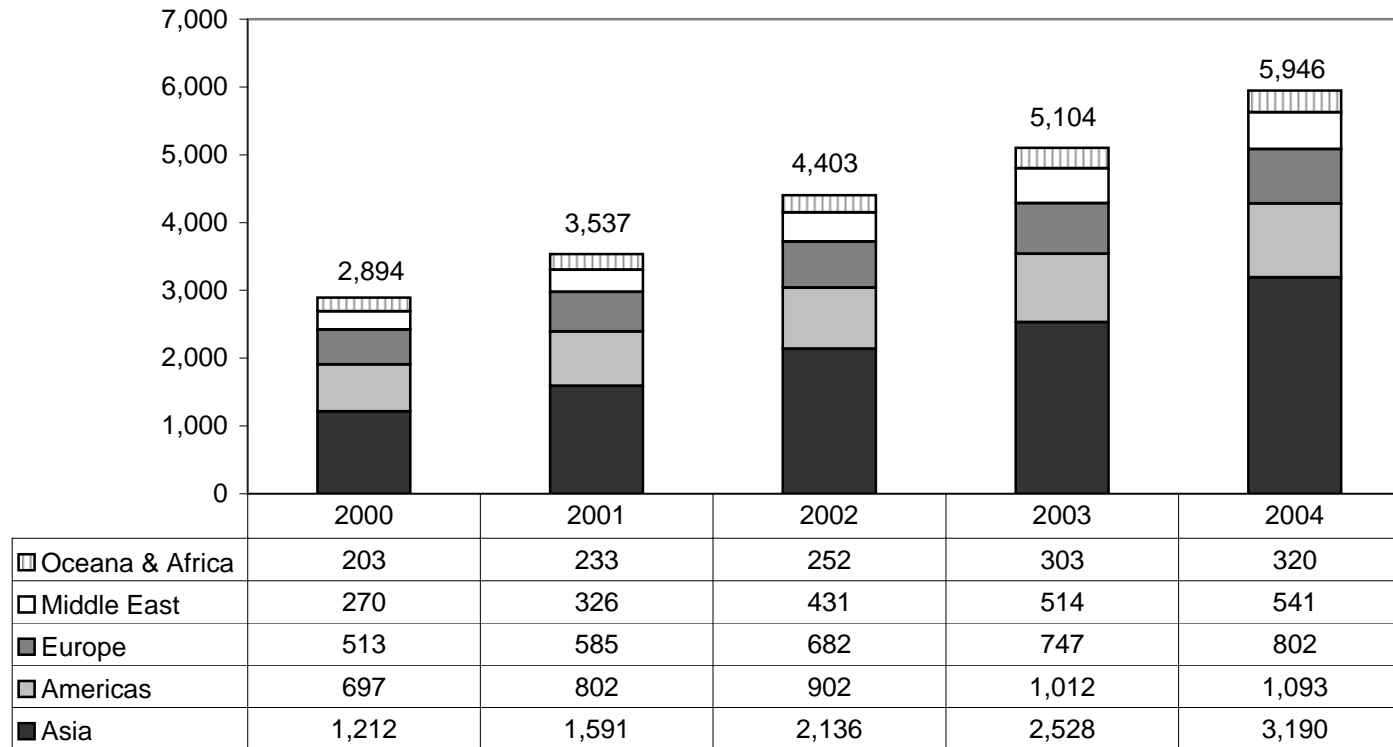


In 2000-01, the largest percentage of graduate international students were from the U.S.A. (22.6%) followed by China including Hong Kong (11.9%).

In 2004-05, the largest percentage of graduate international students were from China including Hong Kong (20.1%) followed by the USA (17.4%).

International Students by Geographic Origin: 5-Year Trend (continued)
2000 to 2004
as at November 1

Total International Students



TEN YEAR ENROLMENT TRENDS, ALL STUDENTS

1995-2004

November 1

	TOTAL STUDENTS*				INTERNATIONAL STUDENTS			
	Undergraduate		Graduate		Undergraduate		Graduate	
	Total	% Female	Total	% Female	Total	% Female	Total	% Female
1995	42,395	55.7%	9,881	53.5%	1,332	44.7%	933	36.0%
1996	42,359	56.3%	9,886	53.4%	1,203	43.2%	823	37.8%
1997	42,362	56.8%	9,874	54.1%	1,141	41.3%	817	37.0%
1998	43,139	56.9%	9,658	54.9%	1,266	43.3%	822	39.1%
1999	44,234	56.8%	9,898	54.8%	1,568	44.4%	899	40.6%
2000	44,964	56.8%	10,163	55.4%	1,914	45.7%	980	40.9%
2001	47,265	57.6%	10,775	56.0%	2,387	47.7%	1,150	42.3%
2002	50,403	57.3%	11,597	56.1%	3,023	49.7%	1,380	43.9%
2003	55,369	57.9%	11,928	55.9%	3,535	49.9%	1,569	41.9%
2004	55,624	56.9%	12,068	55.4%	4,318	49.3%	1,628	41.6%

* Total students includes domestic students and international students.

Note: Excludes students in the Toronto School of Theology.

Beginning 2004-05, excludes students enrolled in Additional Qualification courses.

**GENDER BALANCE OF UNDERGRADUATE AND GRADUATE ENROLMENTS
BY FIELD OF STUDY**

November 1, 2004

STATISTICS CANADA FIELD OF STUDY	UNDERGRADUATE		GRADUATE	
	Total	% Female	Total	% Female
Biological Sciences	4,639	63%	419	58%
Education & Physical Education	2,058	71%	2,129	76%
Engineering & Applied Sciences	4,174	25%	1,735	29%
Fine & Applied Arts	1,366	69%	245	61%
General Arts and Science	9,746	61%	0	n/a
Health Professions	5,416	57%	2,604	67%
Humanities	7,703	62%	1,465	59%
Math & Physical Sciences	3,555	35%	865	32%
Social Sciences	14,884	61%	2,606	50%
Not Specified	2,083	60%	0	n/a
Total	55,624	57%	12,068	55%

Notes: Education & Physical Education includes the Faculty of Physical Education and Health and the Ontario Institute for Studies in Education.
Beginning 2004-05, students enrolled in Additional Qualification courses (OISE) are excluded.
Excludes students in the Toronto School of Theology.
Most of the "not specified" group includes first year and special students in Arts and Science.

UNDERGRADUATE INTAKE BY FACULTY

Fall, 2004

	TOTAL HEADCOUNT					PERCENTAGE OF TOTAL HEADCOUNT				
	GTA Area	Other Ontario	Other Canada	Inter-national	Total	GTA	Other Ontario	Other Canada	Inter-national	Total
Arts & Science										
Mississauga	1,778	196	119	211	2,304	77.2%	8.5%	5.2%	9.2%	100.0%
Scarborough	2,184	102	74	194	2,554	85.5%	4.0%	2.9%	7.6%	100.0%
St George	4,452	517	439	950	6,358	70.0%	8.1%	6.9%	14.9%	100.0%
Total Arts & Science	8,414	815	632	1,355	11,216	75.0%	7.3%	5.6%	12.1%	100.0%
Applied Science	753	80	96	161	1,090	69.1%	7.3%	8.8%	14.8%	100.0%
Dentistry	54	10	8	0	72	75.0%	13.9%	11.1%	0.0%	100.0%
Law	73	31	39	28	171	42.7%	18.1%	22.8%	16.4%	100.0%
OISE/UT	651	133	21	0	805	80.9%	16.5%	2.6%	0.0%	100.0%
Medicine										
B Sc (Med. Radiation Science)	46	27	13	0	86	53.5%	31.4%	15.1%	0.0%	100.0%
MD	52	42	26	0	120	43.3%	35.0%	21.7%	0.0%	100.0%
Total, Medicine	98	69	39	0	206	47.6%	33.5%	18.9%	0.0%	100.0%
Music	74	18	15	7	114	64.9%	15.8%	13.2%	6.1%	100.0%
Nursing	53	44	13	3	113	46.9%	38.9%	11.5%	2.7%	100.0%
Pharmacy	52	50	11	0	113	46.0%	44.2%	9.7%	0.0%	100.0%
Physical Education and Health	112	17	4	2	135	83.0%	12.6%	3.0%	1.5%	100.0%
Total Undergraduate	10,334	1,267	878	1,556	14,035	73.6%	9.0%	6.3%	11.1%	100.0%

Notes: Excludes Transitional Year Program, Academic Bridging Program and Woodsworth diploma & certificate programs.
Intake data is not available for Post-Graduate Medical Education.

GRADUATE INTAKE BY FACULTY

Fall, 2004

	TOTAL HEADCOUNT					PERCENTAGE OF TOTAL HEADCOUNT				
	GTA Area	Other Ontario	Other Canada	Inter-national	Total	GTA	Other Ontario	Other Canada	Inter-national	Total
Applied Science & Engineering	242	33	34	81	390	62.1%	8.5%	8.7%	20.8%	100.0%
Architecture, Landscape & Design	70	3	13	20	106	66.0%	2.8%	12.3%	18.9%	100.0%
Arts & Science	497	102	108	243	950	52.3%	10.7%	11.4%	25.6%	100.0%
Dentistry	12	0	2	2	16	75.0%	0.0%	12.5%	12.5%	100.0%
Forestry	8	7	2	6	23	34.8%	30.4%	8.7%	26.1%	100.0%
Information Studies	92	20	14	9	135	68.1%	14.8%	10.4%	6.7%	100.0%
Law	18	4	7	29	58	31.0%	6.9%	12.1%	50.0%	100.0%
Management	198	17	31	68	314	63.1%	5.4%	9.9%	21.7%	100.0%
Medicine	496	119	78	46	739	67.1%	16.1%	10.6%	6.2%	100.0%
Music	17	5	10	8	40	42.5%	12.5%	25.0%	20.0%	100.0%
Nursing	80	22	11	1	114	70.2%	19.3%	9.6%	0.9%	100.0%
OISE/UT	312	53	23	22	410	76.1%	12.9%	5.6%	5.4%	100.0%
Pharmacy	20	5	1	2	28	71.4%	17.9%	3.6%	7.1%	100.0%
Physical Education & Health	5	3	2	0	10	50.0%	30.0%	20.0%	0.0%	100.0%
SGS Centres & Institutes	72	17	7	17	113	63.7%	15.0%	6.2%	15.0%	100.0%
Social Work	130	37	4	4	175	74.3%	21.1%	2.3%	2.3%	100.0%
Total Graduate	2,269	447	347	558	3,621	62.7%	12.3%	9.6%	15.4%	100.0%

Includes Graduate diplomas in Medicine and Music.

TOTAL INTAKE

Fall, 2004

	TOTAL HEADCOUNT					PERCENTAGE OF TOTAL HEADCOUNT				
	GTA Area	Other Ontario	Other Canada	Inter-national	Total	GTA	Other Ontario	Other Canada	Inter-national	Total
Undergraduate & Graduate	12,603	1,714	1,225	2,114	17,656	71.4%	9.7%	6.9%	12.0%	100.0%

UNIVERSITY OF TORONTO DEGREES AWARDED BY GENDER

Calendar Year 2004

STATISTICS CANADA FIELD OF STUDY*	UNDERGRADUATE		MASTERS		DOCTORAL		TOTAL	
	Total	% Female	Total	% Female	Total	% Female	Total	% Female
Humanities	1,694	66%	349	67%	92	54%	2,135	66%
Social Sciences	3,892	65%	1,348	63%	222	65%	5,462	65%
Physical Sciences	1,659	32%	641	34%	150	25%	2,450	32%
Life Sciences	1,946	68%	594	77%	168	48%	2,708	69%
Total	9,191	60%	2,932	60%	632	49%	12,755	60%

* The category 'Humanities' is the sum of Humanities and Fine & Applied Arts

The category 'Social Sciences' is the sum of Social Sciences and Education & Physical Education

The category 'Physical Sciences' is the sum of Math & Physical Sciences and Engineering & Applied Sciences

The category 'Life Sciences' is the sum of Health Professions and Agricultural & Biological Sciences

Note: Excludes Toronto School of Theology, Certificate and Diploma students.

TUITION FEE SCHEDULE FOR DOMESTIC AND INTERNATIONAL STUDENTS

2005-2006

	DOMESTIC STUDENTS 2005 Entering Cohort	INTERNATIONAL STUDENTS 2005 Entering Cohort
APPLIED SCIENCE & ENGINEERING		
Bachelors	\$7,000	\$18,000
Master of Engineering M.Eng.	\$6,737	\$18,000
ARCHITECTURE, LANDSCAPE, AND DESIGN		
Master of Architecture M. Arch.	\$6,431	\$18,000
Master of Landscape Architecture M.L.A.	\$6,431	\$18,000
Master of Urban Design M.U.D.	\$6,431	\$18,000
ARTS & SCIENCE incl. SCARBOROUGH		
Bachelors	\$4,185	\$16,000
*Bachelors - Bioinformatics and Computational Biology	\$4,185	\$16,000
*Bachelors - Computer Science and Communication Culture & Information Technology	\$4,185	\$16,000
*Bachelors - Commerce/Bus Admin	\$4,185	\$16,000
*Bachelors - Mgt UTM	\$4,185	\$16,000
*Bachelors - UTSC - Joint Programs with Centennial	\$4,185	\$16,000
Master of Science in Planning M.Sc.Pl.	\$6,431	\$16,000
Master of Urban Design Studies M.U.D.S.	\$6,431	\$16,000
Masters of Spatial Analysis - Joint Program with Ryerson M.S.A.	\$6,431	\$16,000
Master of Biotechnology M.Biotech.	\$8,925	\$18,000
Master of Visual Studies M.V.S.	\$5,442	\$16,000
Masters in Environmental Science M.Env.Sc.	\$6,431	\$16,000

*For Arts and Science students in programs with additional cost recovery fees beginning in Year 2 the fee shown for Entering Year is the Arts and Science fee charged to all students in Year 1.

TUITION FEE SCHEDULE FOR DOMESTIC AND INTERNATIONAL STUDENTS (continued)

2005-2006

	DOMESTIC STUDENTS 2005 Entering Cohort	INTERNATIONAL STUDENTS 2005 Entering Cohort
DENTISTRY		
Doctor of Dental Surgery D.D.S.	\$17,950	\$38,000
Bachelors of Science in Dentistry B.Sc. Dent	\$5,367	\$14,022
Graduate Specializations except Dental Public Health	\$13,781	\$30,667
Graduate Specializations - M.Sc. Specialty in Dental Public Health	\$6,737	\$14,506
Combined Specialization/PhD (Except Dental Public Health)	\$9,611	\$21,333
Combined Specialization/PhD in Dental Public Health	\$5,960	\$13,002
Dental Residents - M.O.H. Funded		
MSc Oral & Maxillofacial Surgery & Anaesthesia and Oral Pathology & Oral Medicir	\$1,604	na
MSc Oral Pathology and Oral Medicine	\$2,031	na
Dental Residents - non-M.O.H. Funded	\$17,950	\$40,000
Forestry		
Master of Forest Conservation M.F.C.	\$6,136	\$18,000
INFORMATION STUDIES		
Master of Information Studies M.I.St.	\$6,136	\$18,000
LAW		
Juris Doctor J.D.	\$16,000	\$25,570
Master of Laws L.L.M.	\$5,442	\$18,000
Masters in Studies in Law M.S.L.	\$5,442	\$12,000
MANAGEMENT		
Master of Business Administration M.B.A.	\$25,000	\$36,037
Master of Financial Economics M.F.E	\$17,850	\$24,641
Master of Management & Professional Accounting M.M.P.A.	\$19,000	\$23,153

TUITION FEE SCHEDULE FOR DOMESTIC AND INTERNATIONAL STUDENTS (continued)

2005-2006

	DOMESTIC STUDENTS 2005 Entering Cohort	INTERNATIONAL STUDENTS 2005 Entering Cohort
MEDICINE		
Doctor of Medicine M.D.	\$16,207	\$40,000
Health Science Diplomas	\$6,737	\$14,506
Radiation Sciences	\$4,731	\$16,538
M.Sc. Occupational Therapy and Physical Therapy	\$6,737	\$16,000
Master of Health Science	\$6,737	\$16,000
Master of Science in Biomedical Communications M.Sc.BMC.	\$6,737	\$16,000
Combined MD/PhD	\$10,825	\$26,000
MUSIC		
Undergraduate	\$4,185	\$16,000
Operatic Performance Diploma	\$5,948	\$16,000
Mus.M. (Performance)	\$5,948	\$16,000
Mus.M. (Other)	\$5,442	\$12,000
Advanced Certificate in Performance	\$5,948	\$16,000
NURSING		
Bachelor of Science in Nursing B.Sc.N	\$5,616	\$16,000
Master of Nursing M.N.	\$6,136	\$16,000
OISE/UT		
Bachelor of Education B.Ed.	\$4,643	\$16,000
Technical & Vocational Certificates	\$4,643	\$16,000
Joint Master of Teaching in Human Devt and Curriculum	\$6,737	\$16,000
M.A. in Child Study	\$6,737	\$16,000
Master of Education M.Ed.	\$6,737	\$16,000
Doctor of Education Ed.D.	\$6,364	\$16,000

TUITION FEE SCHEDULE FOR DOMESTIC AND INTERNATIONAL STUDENTS (continued)

2005-2006

	DOMESTIC STUDENTS 2005 Entering Cohort	INTERNATIONAL STUDENTS 2005 Entering Cohort
PHARMACY		
Bachelor of Science in Pharmacy B.Sc.Pharm.	\$9,840	\$20,000
Doctor of Pharmacy Pharm.D.	\$25,350	\$25,350
PHYSICAL EDUCATION AND HEALTH		
Bachelor of Physical Education & Helath B.P.E.H	\$4,185	\$16,000
S.G.S. (annual fee)		
Doctoral Stream	\$5,442	\$12,000
S.G.S. CENTERS AND INSTITUTES		
Master of Industrial Relations M.I.R.	\$6,737	\$18,000
Master of Museum Studies M.M.St.	\$6,737	\$16,000
SOCIAL WORK		
Master of Social Work M.S.W.	\$6,136	\$16,000
TRANSITIONAL YEAR PROGRAM		
Regular	\$3,557	na
Extended	\$1,779	na
WOODSWORTH		
Woodsworth Certificates	\$4,185	\$16,000

TUITION FEE SCHEDULE FOR SELF-FUNDED PROGRAMS

2005-2006

	2004 ENTERING COHORT
Masters of Engineering in Telecommunications	\$25,000
Masters of Engineering in Design & Manufacturing Course Fee	\$2,500
Master of International Trade in Forest Products	\$25,000
Summer Program in Medieval Latin	
Domestic	\$650
International	\$500.00 (U.S.)
Masters of Mathematical Finance	\$32,000
Executive Masters of Business Administration	\$75,000
Executive Masters of Business Administration (OMNIUM GEMBA)	54,000 (U.S.)
Diploma in Forensic Accounting	\$8,000
Faculty of Dentistry Qualifying Program	\$38,290
Sponsored Medical Trainees	\$27,323
Visiting MD Student Course Fee	
1-2 weeks	\$220
3-4 weeks	\$290
5-6 weeks	\$360
7-8 weeks	\$440
Nurse Practitioner Certificate Full Course Fee	\$852
Nurse Practitioner Certificate Half Course Fee	\$426
Nurse Practitioner Integrated Practicum Course Fee	\$1,704
Post-Masters Acute Care Nurse Practitioner Program	\$12,500
OISE/UT- Additional Qualifications Course	\$865
OISE/UT- Laboratory School - Half Day Program	\$5,420
OISE/UT- Laboratory School - Full Day Program	\$8,450
OISE/UT- Laboratory School - Bloorview MacMillan	\$8,147

Part E

Graduates

Graduates by Region	52
Number of Degree Affiliations by College or Faculty	53
Total Annual Gifts Received	54
Total Annual Gifts Received: Source of Donations	55

GRADUATES BY REGION

2005

	NUMBER OF LIVING	PERCENTAGE OF LIVING	TOTAL*
Canada			
Ontario			
Metro Toronto	184,617	44.4%	200,346
Central Ontario	109,600	26.4%	116,987
Southwestern Ontario	21,866	5.3%	26,162
Eastern Ontario	20,670	5.0%	24,293
Northern Ontario	7,728	1.9%	8,972
Rest of Canada			
British Columbia	10,654	2.6%	12,253
Alberta	6,024	1.4%	6,557
Quebec	4,896	1.2%	5,578
Nova Scotia	2,247	0.5%	2,563
Manitoba	1,888	0.5%	2,219
Saskatchewan	1,378	0.3%	1,664
New Brunswick	1,020	0.2%	1,179
Newfoundland	952	0.2%	1,039
Prince Edward Island	285	0.1%	334
Northwest Territories	167	0.1%	180
Yukon Territory	108		112
Nunavut	28		28
Unknown within Canada	4,437	1.1%	32,103
Canada Total	378,565	91.1%	442,569
United States Total	20,695	5.0%	24,456
International Total	16,213	3.9%	17,505
Grand Total	415,473	100.0%	484,530

*Total includes living graduates and deceased graduates, and is included to give a historical context of the total number of individuals who graduated from the University of Toronto.

Notes:

Unique number of graduates (living plus deceased) is 484,530
Regional breakdown is based on data as at Oct. 14, 2005

**NUMBER OF DEGREE AFFILIATIONS
BY COLLEGE OR FACULTY
2005**

	NUMBER OF DEGREE AFFILIATIONS
Arts & Science Programs	
Constituent Colleges:	
Innis College	7,056
New College	17,022
University College	45,238
Woodsworth College	17,297
Federated Colleges:	
St. Michael's College	29,154
Trinity College	17,703
Victoria College	38,435
University of Toronto at Mississauga	30,091
University of Toronto at Scarborough	27,916
Other Faculties	
Applied Science & Engineering	45,223
Architecture, Landscape & Design	3,393
Dentistry	10,662
Forestry	2,786
Graduate Studies/ Graduate Institutes & Centres	95,323
Information Studies	5,778
Joseph L. Rotman School of Management	9,519
Law	7,590
Medicine, Doctor of	14,480
Other Medicine	14,372
Music	4,874
Nursing	9,932
OISE/UT:	
Undergraduate	45,700
Graduate	22,233
Institute of Child Study	2,120
Pharmacy	10,401
Physical & Occupational Therapy	6,482
Physical Education & Health	4,748
Social Work	7,418
Woodsworth Certificate & Diploma	6,686

Notes:

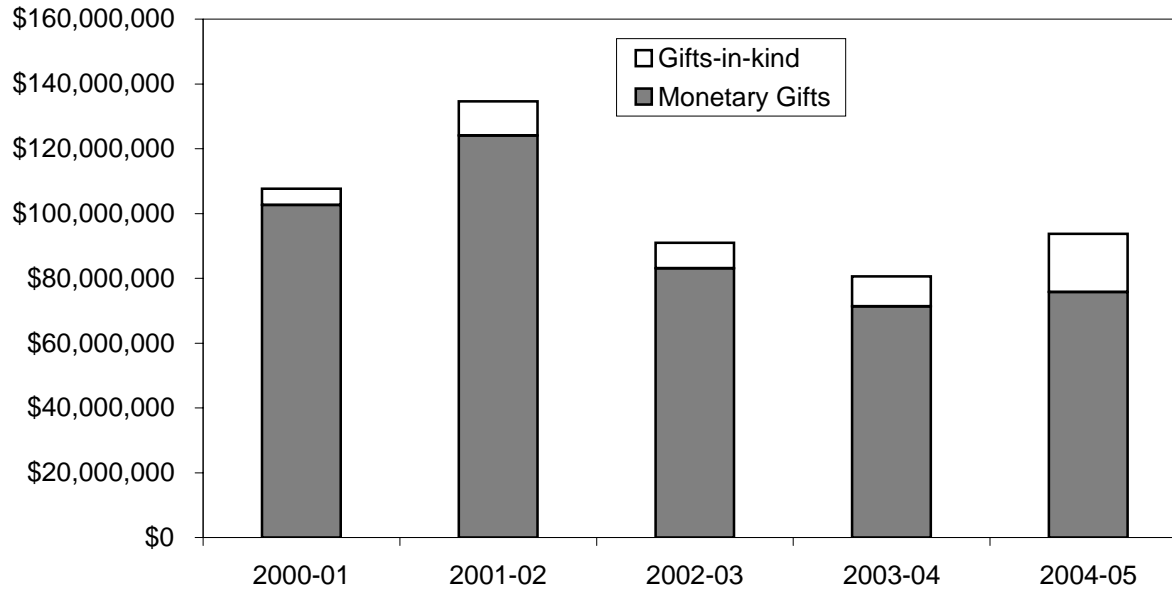
All honorary degrees are excluded.

Graduates with multiple degrees are counted in more than one constituency.

Does not include Toronto School of Theology.

TOTAL ANNUAL GIFTS RECEIVED

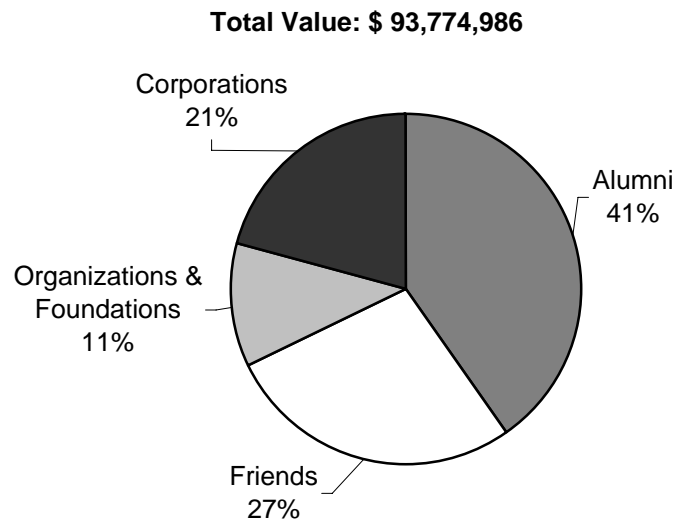
2000-01 to 2004-05



Monetary gifts are based on actual payments received.

The above donations include those received by the University of Toronto and those received by the University of St. Michael's College, University of Trinity College and Victoria University.

**TOTAL ANNUAL GIFTS RECEIVED:
SOURCE OF DONATIONS**
May 1, 2004 - April 30, 2005

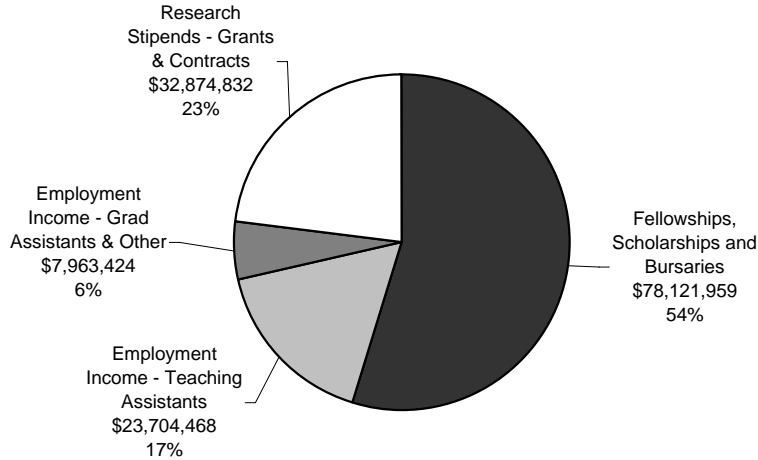


Part F Student Awards

Graduate Student Support by Source	58
Graduate Student Support by S.G.S. Division	58
Undergraduate Student Support : Admission Scholarships, In-Course Scholarships and Bursaries by Faculty and College	59
OSAP and University of Toronto Advanced Planning for Students program (UTAPS) by Faculty and College	60

GRADUATE STUDENT SUPPORT BY SOURCE
2004-2005

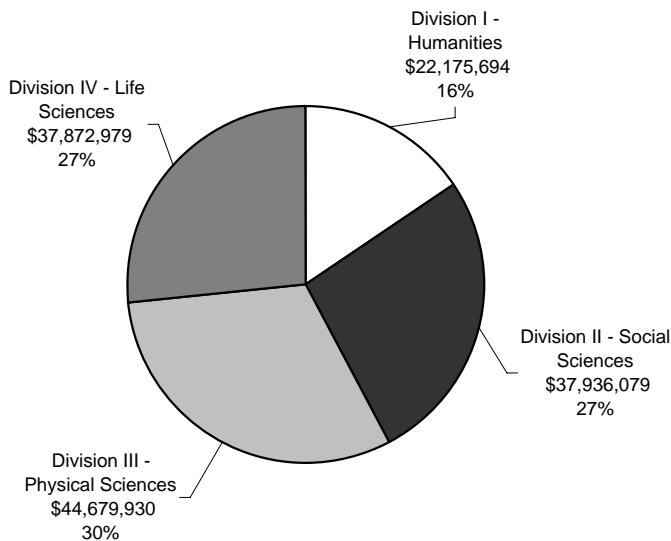
Total \$142,664,683*



*Does not include updated information on research stipends from affiliated teaching hospitals.

GRADUATE STUDENT SUPPORT BY SCHOOL OF GRADUATE STUDIES DIVISION
2004-2005

Total \$142,664,683*



*Does not include updated information on research stipends from affiliated teaching hospitals.

**UNDERGRADUATE STUDENT SUPPORT:
ADMISSION SCHOLARSHIPS, IN-COURSE SCHOLARSHIPS AND BURSARIES
2004-2005**

FACULTY / COLLEGE	ADMISSION SCHOLARSHIPS		IN-COURSE SCHOLARSHIPS		BURSARIES	
	Number	Value	Number	Value	Number	Value
Applied Science and Engineering	231	727,601	228	556,556	1,892	4,644,505
Arts and Science, St. George						
Innis College	30	102,855	185	203,536	299	525,626
New College	102	223,115	200	189,033	871	1,848,762
University College	270	399,073	479	634,233	1,036	2,354,371
Woodsworth College	16	46,000	130	121,163	1,843	3,186,654
St. Michael's College	37	127,900	186	332,918	610	1,079,876
Trinity College	117	284,551	464	496,889	286	569,914
Victoria College	129	352,429	608	831,773	656	1,157,517
Dentistry	3	3,138	66	42,057	236	685,734
Law	20	40,343	128	75,191	489	1,914,072
Medicine	4	5,600	288	215,995	721	3,784,274
Radiation Sciences	0	0	1	1,500	178	362,345
Music	19	32,914	110	155,460	153	286,067
Nursing	8	11,249	27	34,547	176	522,806
OISE/UT Undergraduate	13	31,373	20	20,523	416	1,510,886
Pharmacy	17	12,652	102	78,385	800	1,295,580
Physical Education and Health	6	15,000	48	25,499	105	163,779
Transitional Year Program	2	3,993	14	3,510	198	578,720
U of T at Mississauga	162	233,945	121	98,383	1,106	2,207,179
U of T at Scarborough	148	212,375	289	310,142	1,655	3,207,296
Total	1,334	\$2,866,106	3,694	\$4,427,291	13,726	\$31,885,962

OSAP AND UTAPS BY FACULTY AND COLLEGE

2004-2005

FACULTY / COLLEGE	OSAP APPLICANTS AS A PERCENTAGE OF FULL-TIME ENROLMENT		OSAP		UTAPS	
			Number	Value	Number	Value
Applied Science and Engineering	43%		1,508	9,707,105	1,485	3,608,782
Arts and Science, St. George						
Innis College	32%		395	2,724,810	121	282,000
New College	38%		1,215	8,160,069	337	851,200
University College	36%		1,192	8,404,353	338	840,773
Woodsworth College	43%		1,451	11,342,467	523	1,301,400
St. Michael's College	30%		965	6,389,411	210	502,050
Trinity College	30%		357	2,377,448	98	253,400
Victoria College	33%		979	6,721,763	265	597,400
Dentistry	69%		182	1,844,658	179	614,946
Law	48%		241	1,918,330		
Management	22%		134	964,190		
Medicine	66%		482	4,963,165		
Radiation Sciences	53%		184	1,814,725	83	238,620
Music	32%		105	737,254	35	102,839

OSAP AND UTAPS BY FACULTY AND COLLEGE (continued)
2004-2005

FACULTY / COLLEGE	OSAP APPLICANTS AS A PERCENTAGE OF FULL-TIME ENROLMENT		OSAP		UTAPS	
			Number	Value	Number	Value
Nursing	55%		162	1,740,676	86	310,500
OISE/UT Undergraduate	35%		366	3,604,987	175	597,400
OISE/UT Graduate	18%		173	1,755,380	143	595,600
Pharmacy	56%		363	2,575,449	362	824,832
Physical Education and Health	31%		108	766,932	26	57,800
School of Graduate Studies	13%		864	8,161,867	722	2,185,291
Transitional Year Program	88%		53	620,329	34	144,050
U of T at Mississauga	36%		2,344	15,526,651	658	1,640,950
U of T at Scarborough	48%		3,174	19,850,976	917	2,155,975
Total	35%		16,997	\$122,672,995	6,797	\$17,705,808

Notes:

1. UTAPS at Law, Management and Medicine is distributed as part of their grants programs and are not included above.
2. UTAPS for School of Graduate Studies are also included in the totals shown in Graduate Student Support by Graduate Studies Division
3. UTAPS data in this table refer to grants awarded to OSAP recipients only.
4. Dental Residents and Post-Graduate Medicine students are excluded.

Part G

Faculty and Administrative Staff

Distribution of Full-Time Appointed Tenured/Tenure Stream Faculty by Major Division and Main Appointment	64
Distribution of Full-Time Tenured/Tenure Stream Faculty by Rank and Gender	65
Age Distribution of Tenured/Tenure Stream Faculty	65
Distribution of Full and Part-Time ($\geq 25\%$) Academic Staff and Librarians by Rank and Gender	66
Distribution of Full-Time and Part-Time Administrative and Union Staff	68
Operating Fund Full-Time Equivalent Staff	69

**DISTRIBUTION OF FULL-TIME APPOINTED TENURED/TENURE
STREAM FACULTY BY MAJOR DIVISION AND MAIN APPOINTMENT**

All Sources of Funding

October 2004

DIVISION	%			TOTAL
	MALE	FEMALE	FEMALE	
Applied Science and Engineering	182	15	7.6%	197
Architecture, Landscape, and Design	11	1	8.3%	12
Arts and Science*	477	176	27.0%	653
Dentistry	35	7	16.7%	42
Forestry	11	3	21.4%	14
Information Studies	5	9	64.3%	14
Law	33	18	35.3%	51
Management**	61	11	15.3%	72
Medicine	117	64	35.4%	181
Music	19	8	29.6%	27
OISE/UT	52	74	58.7%	126
Nursing	1	20	95.2%	21
Pharmacy	16	9	36.0%	25
Physical Education and Health	9	5	35.7%	14
School of Graduate Studies	12	4	25.0%	16
Social Work	8	14	63.6%	22
U of T at Mississauga	133	52	28.1%	185
U of T at Scarborough	107	45	29.6%	152
Total	1,289	535	29.3%	1,824

* Arts & Science includes Transitional Year Program and the St. George campus colleges (Innis, New, University, Woodsworth, St. Michael's, Trinity, Victoria Colleges)

** Management only contains Joseph L. Rotman School of Management

**DISTRIBUTION OF FULL-TIME TENURED/TENURE STREAM FACULTY
BY RANK AND GENDER**

All Sources of Funding
October 2004

RANK	MALE	FEMALE	% FEMALE	TOTAL
Professor	677	162	19.3%	839
Associate Professor	360	215	37.4%	575
Assistant Professor	242	148	37.9%	390
Assistant Professor (conditional)	10	10	50.0%	20
Total	1,289	535	29.3%	1,824

Note: Includes Faculties of Medicine and Dentistry.

AGE DISTRIBUTION OF TENURED/TENURE STREAM FACULTY

October 2004

RANK	AVERAGE AGE
Professor	54.7
Associate Professor	47.4
Assistant Professor	36.9
Assistant Professor (conditional)	32.3

Note: Total number of Full-time Tenured/Tenure Stream Faculty = 1,824

DISTRIBUTION OF FULL AND PART-TIME (>=25%) ACADEMIC STAFF AND LIBRARIANS BY RANK AND GENDER

All Sources of Funding
October 2004

RANK	FULL-TIME			Total
	Male	Female	%	
Professor	815	186	18.6%	1,001
Associate Professor	483	264	35.3%	747
Assistant Professor	333	229	40.7%	562
Assistant Professor (cond)	12	10	45.5%	22
Lecturer (medical)	4	5	55.6%	9
Instructor	7	5	41.7%	12
Senior Lecturer/Lecturer	96	140	59.3%	236
Senior Tutor/Tutor	10	13	56.5%	23
Sub-Total	1,760	852	32.6%	2,612
Librarian	41	99	70.7%	140
Total	1,801	951	34.6%	2,752

RANK	PART-TIME			Total
	Male	Female	%	
Professor	33	12	26.7%	45
Associate Professor	45	17	27.4%	62
Assistant Professor	41	38	48.1%	79
Assistant Professor (cond)	0	0	---	0
Lecturer (medical)	3	3	50.0%	6
Instructor	0	0	---	0
Senior Lecturer/Lecturer	81	88	52.1%	169
Senior Tutor/Tutor	5	4	44.4%	9
Sub-Total	208	162	43.8%	370
Librarian	4	10	71.4%	14
Total	212	172	44.8%	384

DISTRIBUTION OF FULL AND PART-TIME (>=25%) ACADEMIC STAFF AND LIBRARIANS BY RANK AND GENDER Continued

All Sources of Funding
October 2004

RANK	TOTAL			Total
	Male	Female	%	
Professor	848	198	18.9%	1,046
Associate Professor	528	281	34.7%	809
Assistant Professor	374	267	41.7%	641
Assistant Professor (cond)	12	10	45.5%	22
Lecturer (medical)	7	8	53.3%	15
Instructor	7	5	41.7%	12
Senior Lecturer/Lecturer	177	228	56.3%	405
Senior Tutor/Tutor	15	17	53.1%	32
Sub-Total	1,968	1,014	34.0%	2,982
Librarian	45	109	70.8%	154
Total	2,013	1,123	35.8%	3,136

Notes: Includes Faculty of Medicine and Dentistry.
Includes both tenured/tenure stream and non-tenure stream professorial staff.

DISTRIBUTION OF FULL-TIME AND PART-TIME ADMINISTRATIVE AND UNION STAFF

September 2004

EMPLOYEE GROUP	FULL-TIME			PART-TIME			ALL		
	Male	Female	Total	Male	Female	Total	Male	Female	Total
Non-Unionized Employees									
ESL Instructor	11	17	28	0	0	0	11	17	28
Research Associate	159	75	234	13	8	21	172	83	255
USWA-exempt Admin staff*	292	465	757	4	32	36	296	497	793
Total non-unionized employees	462	557	1,019	17	40	57	479	597	1,076
Unionized Employees									
89 Chestnut	49	34	83	8	11	19	57	45	102
Early Learning Centre	2	26	28	1	4	5	3	30	33
Library Workers	57	120	177	8	12	20	65	132	197
Operating Engineers	76	2	78	0	0	0	76	2	78
Police	35	15	50	0	0	0	35	15	50
Research Associates & Officers OISE/UT	2	8	10	3	8	11	5	16	21
Service Workers	339	236	575	4	10	14	343	246	589
Teaching Assistants**	0	0	0	1,783	1,519	3,302	1,783	1,519	3,302
Trades and Services***	59	1	60	0	0	0	59	1	60
USW Admin staff*	891	2,006	2,897	45	221	266	936	2,227	3,163
Total unionized employees	1,510	2,448	3,958	1,852	1,785	3,637	3,362	4,233	7,595
Total	1,972	3,005	4,977	1,869	1,825	3,694	3,841	4,830	8,671

* Excludes Non University of Toronto Departments.

** Includes 195 OISE Graduate Assistants

*** Trades and Services includes Machinists, Carpenters, Electrical Workers, Sheet Metal Workers, Plumbers, Pipefitters, and Painters.

OPERATING FUND FULL-TIME EQUIVALENT STAFF

2004-05

DIVISION	ACADEMIC	NON-ACADEMIC*
Applied Science and Engineering	229.91	196.35
Architecture, Landscape, and Design	26.59	17.70
Arts & Science**	881.54	456.89
Colleges***	18.48	107.13
Dentistry	82.54	161.40
Forestry	15.09	7.00
Graduate Centres and Institutes	26.10	30.62
Information Studies	14.00	19.35
Law	50.25	62.65
Management	85.20	110.71
Medicine	737.52	407.86
Mississauga, University of Toronto at	253.80	105.89
Music	51.37	28.34
Nursing	43.90	25.40
OISE/UT	184.70	143.65
Pharmacy	39.51	29.05
Physical Education and Health	16.62	7.70
Scarborough, University of Toronto at	223.37	74.23
School of Continuing Studies	0.00	65.00
School of Graduate Studies	7.90	42.40
Social Work	23.00	10.20
Transitional Year Program	10.40	2.50
Subtotal	3,021.79	2,112.02
Academic Services	4.00	565.38
Campus and Student Services	12.93	299.89
Central Administration	14.30	778.51
Facilities and Services	0.00	692.50
Other Academic Costs	0.00	1.17
Grand Total	3,053.02	4,449.47

Notes:

*Librarians, Admin and Union staff are included in the non-academic group.

**Arts and Science includes Innis, New, St. Michael's, University College Programs related to Arts & Science.

***Colleges include Innis, Munk Centre, New, University, Woodsworth programs and resources independent of Arts & Science

Part H

Library

Library Collections	72
Number of Loans	73
Number of Computers in the Library	73
Digital Library E-Resources	73
Number of Electronic Articles Downloaded	74

LIBRARY COLLECTIONS

2004-2005

There are 32 libraries in the University of Toronto Library System.

COLLECTIONS *	CENTRAL LIBRARIES	LOCAL LIBRARIES	SCARBOROUGH/ MISSISSAUGA	FEDERATED/ AFFILIATED	DIGITAL LIBRARY**	TOTAL
Books	7,363,875	1,059,678	626,508	1,285,349	32,242	10,367,652
Cartographic Materials	242,741	8	39,441	27		282,217
CD-ROM (Bibliog & Text)	3,651	1,797	0	23		5,471
Computer Data Files	447,818	960	157	540		449,475
Films & Videos	23,415	2,023	573	2,117		28,128
Graphic Materials	214,158	372,610	63,374	71,541		721,683
Microforms	5,075,807	132,543	38,091	125,493		5,371,934
Music Scores		64,127	1,003			65,130
Sound Recording	9,807	179,143	4,039	3,645		196,634
Other Formats	29,911	33,566	266	666	2	64,411
Total	13,411,183	1,846,455	773,452	1,489,401	32,244	17,552,735
Current Serials	20,943	5,910	2,987	2,645	39,012	71,497
Manuscripts (Metres)	11,164	151	0	136		11,451

* Materials on transfer from Central to Local Libraries (previously included in Central Libraries' counts) are shown in the counts for Local Libraries where they are located. Bound volumes of subscriptions are included in the Book counts.

** Electronic resources (Books & journals).

NUMBER OF LOANS

2004-2005

Central Libraries	
Robarts Library	1,756,294
Gerstein Science Information Centre	371,750
OISE/UT Library	206,909
Fisher Library/Archives	18,549
Media Commons *	92,630
Branch Libraries	172,813
Sub-Total	2,618,945
Local Libraries	
UTMississauga Library	484,273
UTScarborough Library	236,180
Federated/Affiliated Libraries*	84,259
Total	650,625
Total	4,074,282

* Media Commons includes Audio Visual Library and Microtext

NUMBER OF COMPUTERS IN THE LIBRARY

April 30, 2005

Computers in the Network	2,164
Stand-Alone PC's	112
VT Terminals	0

DIGITAL LIBRARY E-RESOURCES

April 29, 2005

	LICENSED**	PUBLIC***	TOTAL
Images	1	1	2
Journal Collections	2	0	2
Journals Indexes and Abstracts	437	72	509
Journals	33,529	3,831	37,360
PDA/Handheld	1	6	7
Reference Sources	457	80	537
Books	24,702	7,540	32,242
Newspapers and News Services	546	51	597
Total	59,675	11,581	71,256

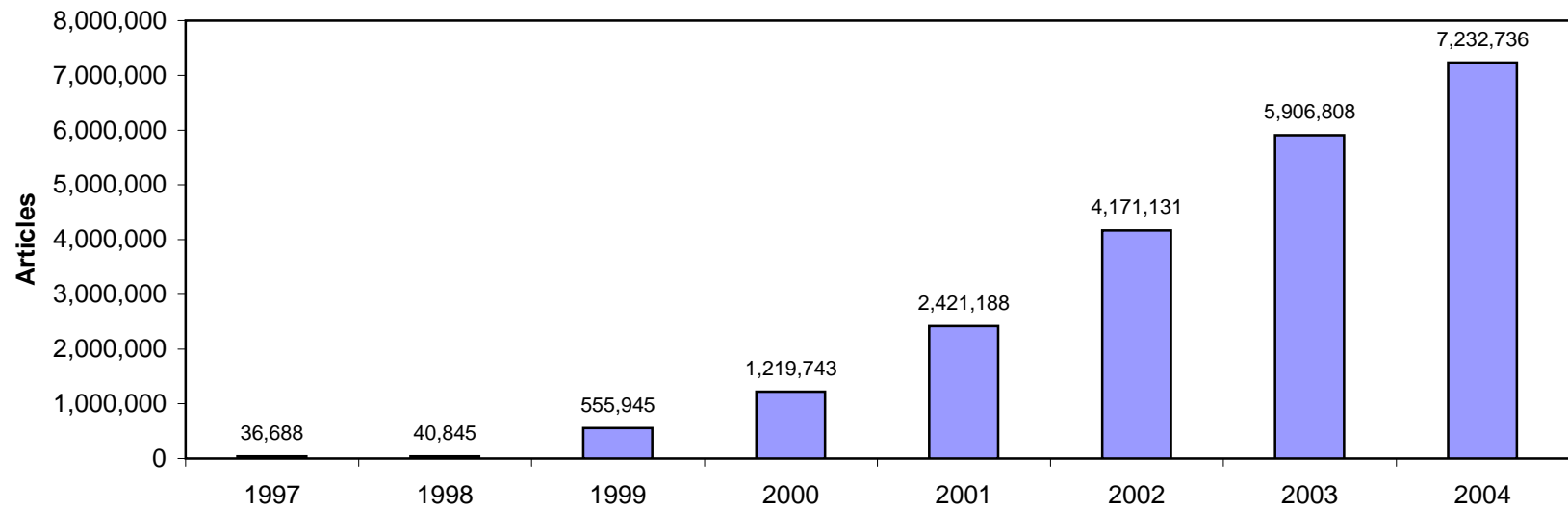
** These items are available on the Internet for use by anyone.

*** These items are available on the Internet for use by anyone.

For current figures, see <http://main.library.utoronto.ca/eir/EIRwhatsnew.cfm>

NUMBER OF ELECTRONIC ARTICLES DOWNLOADED

1997-2005



Data for 1997 to 2004 is adjusted to reflect revised data and data not previously available from publishers, aggregators and systems.

Part I

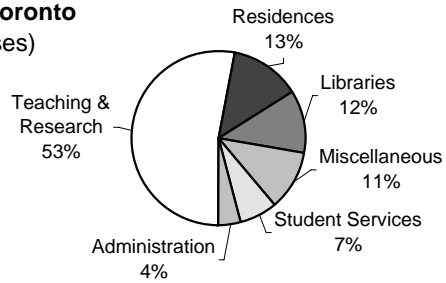
Physical Plant

Usage of Assignable Space	76
Number of Buildings and Gross Square Metres	77
Area of U of T Properties	78
Number of Parking Spaces	78
Public Assembly Facilities	78
Number of Places in Student Residences	79

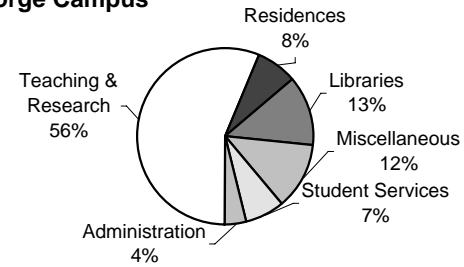
USAGE OF ASSIGNABLE SPACE

2004-2005

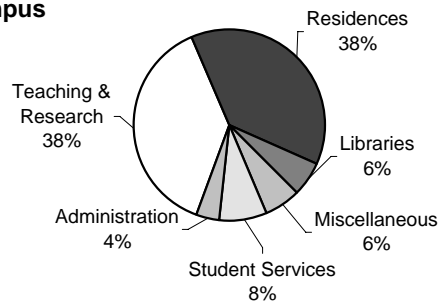
University of Toronto (All Campuses)



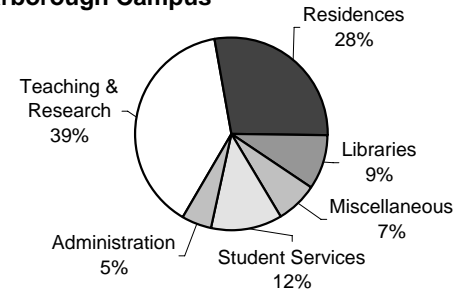
St. George Campus



Mississauga Campus



Scarborough Campus



Note: Student Services includes: Athletics, Food Services, Bookstore and Merchandising and Health Services.
 Miscellaneous includes: Plant Maintenance, Assembly & Exhibition Facilities, Common Use and Student Activity and Other University Facilities.
 Teaching and Research includes: Classrooms, Teaching and Research Laboratories, Academic Services, Health Science Clinic Facilities, Central Services and Media Services.

NUMBER OF BUILDINGS AND SQUARE METRES

2004-2005 as at September 2005

	NUMBER OF BUILDINGS	NET ASSIGNABLE SQUARE METRES	NET SQUARE METRES	GROSS SQUARE METRES
University				
St. George	112	525,877	851,036	994,089
Leased St. George	7	4,746	6,285	7,182
Scarborough	33	57,399	88,675	102,738
Mississauga	44	71,525	123,430	140,621
Total University	196	659,547	1,069,426	1,244,630
Federated Colleges and Massey	53	100,388	150,412	189,205
Grand Total	249	759,935	1,219,838	1,433,835

Note: **Net Assignable Square Metres** is the sum of all areas on all floors of the building assigned to, or available for assignment to, an occupant, including every type of space functionality used by an occupant.
Net Square Metres is the sum of all areas on all floors of the building, both assigned (see definition above) and non-assigned (ie corridors, stairs, mechanical rooms etc.)
Gross Area Square Metres is the sum of all floors areas included within the outside faces of exterior walls, which have floor surfaces.

AREA OF U OF T PROPERTIES

2004-2005

	HECTARES
CAMPUSES	
Downtown Campus	
St. George	51.3
Federated Colleges and Massey	17.3
Total Downtown Campus	68.6
Scarborough	121.5
Mississauga	90.2
Total Campuses	280.3
OFF CAMPUS	
David Dunlap Observatory	76.9
Aerospace	11.9
Joker's Hill	346.0
Total Off Campus	434.8
Grand Total	715.1

Note: Excludes Glendon and Huron/Sussex.
Total Downtown Campus includes St. George,
Federated Colleges and Massey.

NUMBER OF PARKING SPACES

2004-2005

	NUMBER OF SPACES
St. George	2,100
Scarborough	3,188
Mississauga	2,600
Total	7,888

NUMBER OF PUBLIC ASSEMBLY FACILITIES

2004-2005

	NUMBER OF FACILITIES	SEATING CAPACITY
St. George Lecture Theatres / Hall*	43	10,127
St. George Auditorium	4	3,400
Dining Rooms and Cafeterias*	32	4,108
Varsity Arena	1	4,100

* Including Federated Colleges.

NUMBER OF UNIVERSITY OF TORONTO STUDENTS IN RESIDENCE

2004-05

	NUMBER OF FIRST-YEAR STUDENTS	NUMBER OF STUDENTS	TOTAL SPACES
University of Toronto Residences			
St. George Including Federated Universities			
89 Chestnut	458	935	958
Charles Street Apartments*	0	713	713
Graduate House	0	431	431
Innis College	196	324	327
New College	492	874	877
St. Michael's College	238	693	704
Trinity College	185	435	435
University College	263	441	441
Victoria University	390	802	802
Total St. George	2,222	5,648	5,688
University of Toronto at Mississauga			
Graduate & Family Housing*	0	160	176
Undergraduate Housing	409	776	776
Total U of T at Mississauga	409	936	952
University of Toronto at Scarborough	355	766	766
Total University of Toronto residences	2,986	7,350	7,406
Independent Campus Residences			
Campus Co-Op	12	205	292
Knox College	2	104	104
Massey College	0	61	61
Neil-Wycik Co-Operative**	0	29	780
St. Vladimir Institute	0	34	46
Tartu College	1	521	93
Wycliffe College	0	69	71
Total Independent Residences	15	1,023	1,447
Grand Total	3,001	8,373	8,853

* Premises house students and their family. Some families may include 2 students.

** Premises house mainly Ryerson students.

Notes: As of the beginning of the academic year.
Includes TST students.

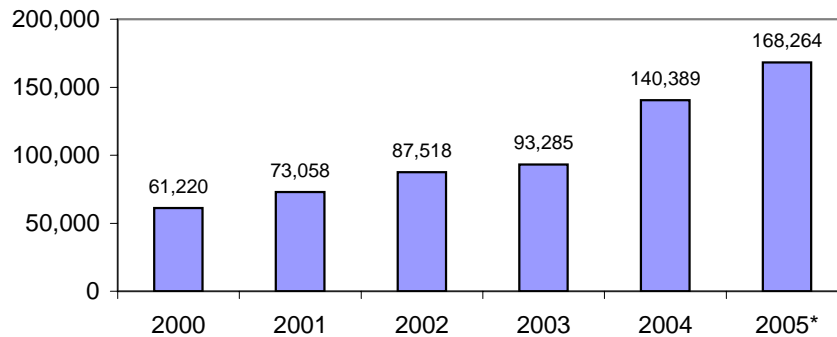
Part J

Computing and Communications

Number of UTORmail accounts at Year End	82
Number of Messages Delivered by UTORmail Post Office	82
Number of Web Transactions	82
Institutional Internet Dial-in Service	83
a) Dial-in Modem	
b) U of T/Bell Sympatico High Speed Edition (HSE)	
c) Virtual Private Network (VPN)	
Campus Wireless Network	83
Usage of Electronic Student Services	84

NUMBER OF UTORmail ACCOUNTS AT YEAR END

2000-2005

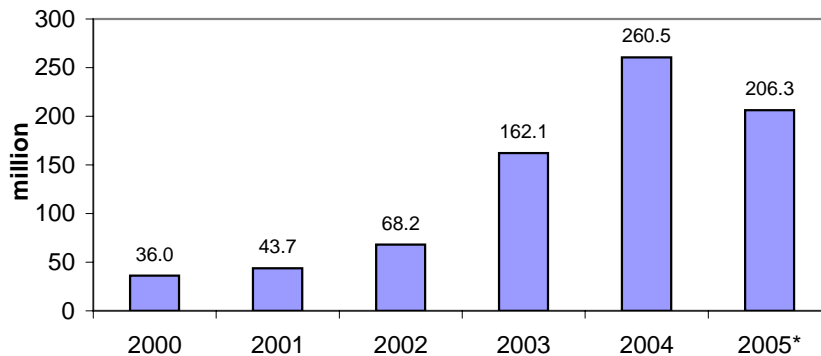


*Note: 2005 figures represent the number of UTORmail accounts up to September 30, 2005. 2000-2004 figures are from Jan. 1 to Dec. 31.

NUMBER OF MESSAGES DELIVERED BY UTORmail POST OFFICE

2000-2005

(In Millions)



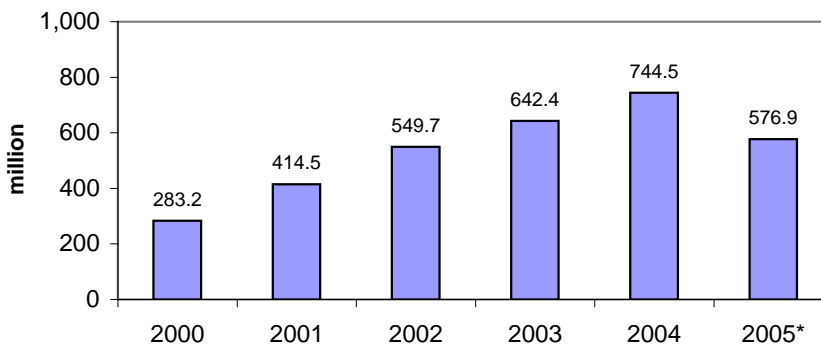
*Note: 2005 figures represent the number of messages delivered up to September 30, 2005. 2000-2004 figures are from Jan. 1 to Dec. 31.

NUMBER OF WEB TRANSACTIONS

For the institutional server www.utoronto.ca

2000-2005

(In Millions)



*Note: 2005 figures represent the number of web transactions up to September 30, 2005. 2000-2004 figures are from Jan. 1 to Dec. 31.

INSTITUTIONAL INTERNET DIAL-IN SERVICES

2000-2005

Dial-in modem

Up to 56,000 bits per second

Date	Phone Lines	Active Users	Calls per Week
November 2000	663	12,500	113,000
November 2001	597	9,900	92,000
November 2002	413	7,300	68,000
October 2003	333	5,600	52,000
October 2004	255	3,900	36,000
October 2005	124	2,400	21,000

U of T/Bell Sympatico

High Speed Edition (HSE)*

Up to 960,000 bits per second

Date	Using UofT Network Address
November 2000	237
November 2001	419
November 2002	624
October 2003	468
October 2004	275
October 2005	160

Note: This service is being phased out. It may remain operational for an indeterminate time but Bell does not provide any service guarantees and may discontinue the feature at any time.

Virtual Private Network (VPN)

Provides 'direct' access to the UofT network.

Date	Number of Users
December 2004	0
December 2005	572

*Service first became available in January 2005.

The VPN service replaces the UofT/Bell Sympatico HSE.

CAMPUS WIRELESS NETWORK*

2000-2005

Date	Buildings	Access Points	Sessions per Week
November 2000	0	0	0
November 2001	8	56	500
November 2002	15	118	4,500
October 2003	19	143	9,800
October 2004	24	244	14,000
October 2005	41	320	25,000

*Service first became available in September 2001.

USAGE OF ELECTRONIC STUDENT SERVICES

September 1, 2004 to August 31, 2005

ACTIVITY	ROSI STUDENT WEB SERVICES rosi.utoronto.ca
Accessing the System	
Successful attempt to login	5,936,248
Unsuccessful attempt to login	226,742
Access suspended	16,436
Change PIN	62,159
Unsuccessful attempt to change PIN	2,980
Setup completed for PIN reactivation	30,392
Successful attempt to reactivate PIN	31,338
Unsuccessful attempt to reactivate PIN	9,663
Suspend PIN reactivation	4,930
Maintaining Personal Information	
Add new address	7,825
Change address	53,452
Add new contact information	4,771
Change contact information	3,192
Delete contact information	401
Add new telephone number	5,507
Change telephone number	7,300
Change e-mail address	23,974
Choosing/Changing Academic Options	
Add academic activity	634,146
Drop academic activity	296,554
Modify academic activity	284,775
List courses	2,907,535
Accept Subject POST	9,008
Add new Subject POST	49,137
Change Subject POST	8,962
Delete Subject POST	32,346
Cancel invited registration	267
Cancel registration/Deregister	7,194
Confirm graduation request	8,845
Requesting/Paying for Transcripts	
Add bank information	1,125
Cancel bank information	51
Request transcript, charged to account	11,893
Request transcript, paid electronically	27,921
Request transcript pending payment	34,692
Create electronic transcript invoice	31,545
Pay electronic transcript invoice	24,186
Unsuccessful electronic payment	2,437
Participating in Campus Life	
Opt out of SAC Health Insurance	23,869
Submit an electronic vote	54,394