

LANDMARK CONSTRUCTION UPDATES



Dear U of T community member:

In case you haven't heard the good news, [U of T recently announced plans](#) to increase in-person learning and activities across its campuses as of February 7. I am delighted that our community members will finally be able to see our progress on Landmark to-date. No doubt it'll be a surprise to many: words and photos can only capture so much of this incredible [transformation](#).

At King's College Circle (KCC), we're continuing our concrete work with the construction of foundation walls and columns. We have completed about 50% of all foundation footings. Over the next year, we're estimating that over 1200 cement trucks will visit our site.

We continue to reroute and relocate underground services and began installing new underground storm service lines. We also drilled several piles on the eastern side and plan on drilling some more in April, when we complete the Landmark parking garage drive entry ramp. For now, we're focused on excavation work in this area.

Reels of fibre were delivered last week and we've started the cable pull from Gerstein to Canadiana Galleria. Once that's done, we'll move to University College Building, then to the Trinity Building and then to the Law Building in the coming weeks. This will allow us to transform part of the existing service tunnel at the northeast corner of King's College Circle to make way for the entrance ramp.

Other updates include:

- The Back Campus, the Whitney Walk and Tower Road areas are open for public access. One of two bleachers at Tower Road is complete and the second one is currently under construction. For now, all granite installation work (at Hart House and Tower Road) and planting work (Medical Sciences Building East, Tower Road West, Hart House East) has been temporarily paused due to winter weather conditions and will resume in the spring.
- Hart House Terrace (Arbor Room) is open to the public. Waterproofing work at the Observatory is complete and we will form the retaining walls and install the new Observatory patio shortly. Removals and excavation for the installation of the granite pathway along Hart House West is set to start in the coming days.
- At the Medical Sciences Building (MSB), the upper terrace is open to the public and the planting is complete. On the east side of the MSB, we have completed structural repairs including the ceiling, installation of waterproofing and geofoam (which ensures we do not overload the tunnel below with too much soil) as well as the precast columns. Installation of a new ramp and hardscape is underway.
- Removals for the installation of geothermally heated pathways (snow melt system) and granite work at Alumni Plaza and MSB plaza will commence in spring 2022. Keep an eye out for more new benches installed at Whitney Walk and Sir Daniel Wilson Quad, with others currently being installed at the Medical Sciences Building.

I look forward to seeing you in person in the future and, if you're able, I encourage you to check out the amazing work underway in the heart of the St. George campus. Please see progress photos below.

Kind regards,

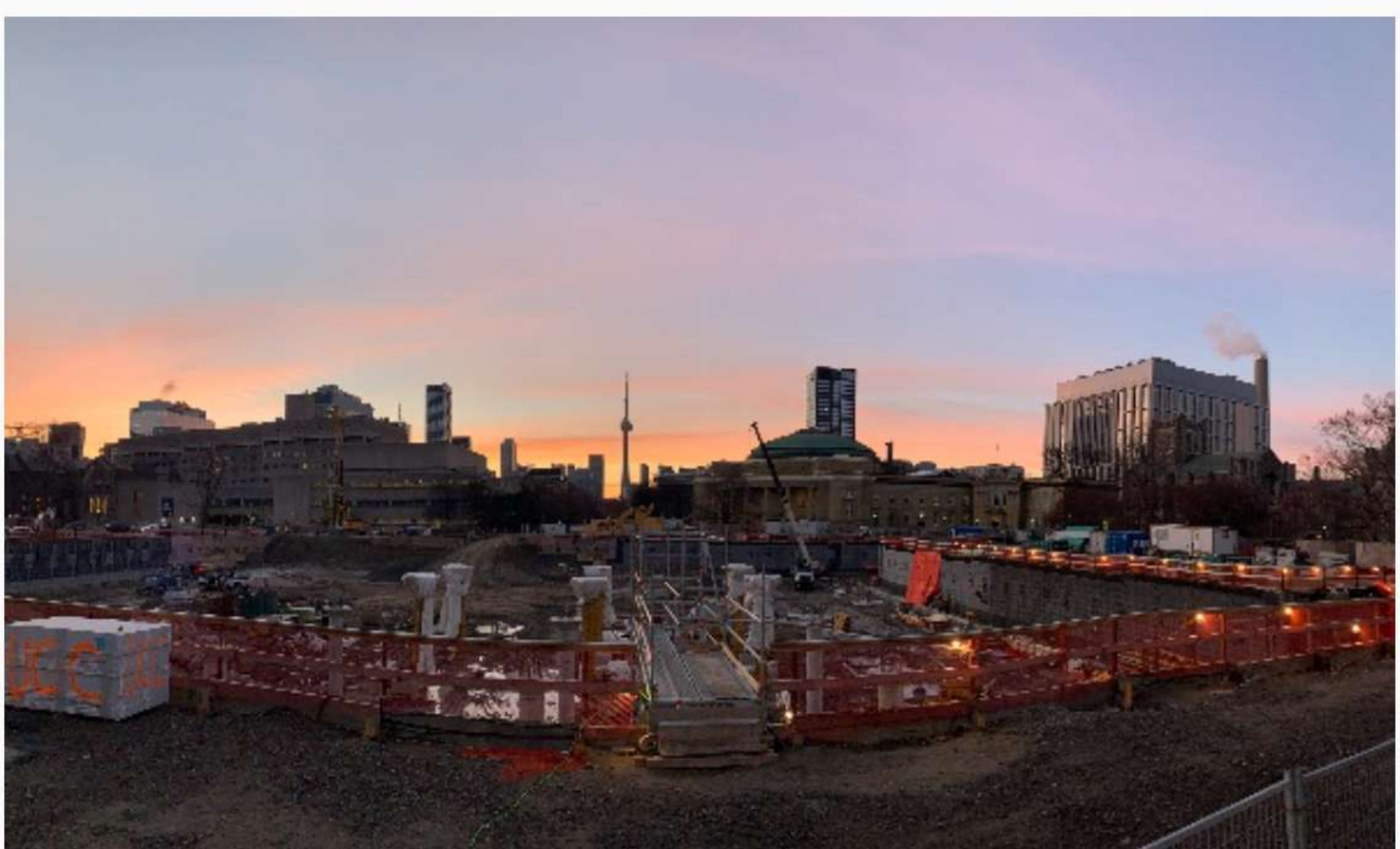
Scott Mabury
Vice-President, Operations and Real Estate Partnerships



View of King's College Circle (KCC) January 2022



KCC - January 2022



January 2022