

LANDMARK CONSTRUCTION UPDATES



Dear U of T community member:

It's hard to believe we're nearing the end of 2021, with only a month to go until 2022. While COVID-19 has made construction challenging at times, I am delighted with the Landmark Project's progress over the past year. It takes a great deal of ingenuity and commitment to transform our spaces in the best of times; the pandemic has also called for tremendous resilience on the part of our construction crews. I can't thank the team enough. They are truly exceptional professionals.

For our final update of 2021, I'll share that we've finished the site-servicing work on the south-end of King's College Circle (KCC) and we're busy completing watermain and sanitary works over at the north-east corner. We've also completed our first concrete wall pour, which lays the foundation of our parking structure. It's the first of several wall pours. Over the next year, we estimate that a total of about 1,200 cement trucks will visit KCC.

We're almost finished the fibre line re-routing project inside several buildings on campus. Once this is complete, we'll be able to transform part of an existing service tunnel into Landmark's parking garage entrance ramp.

Other updates include:

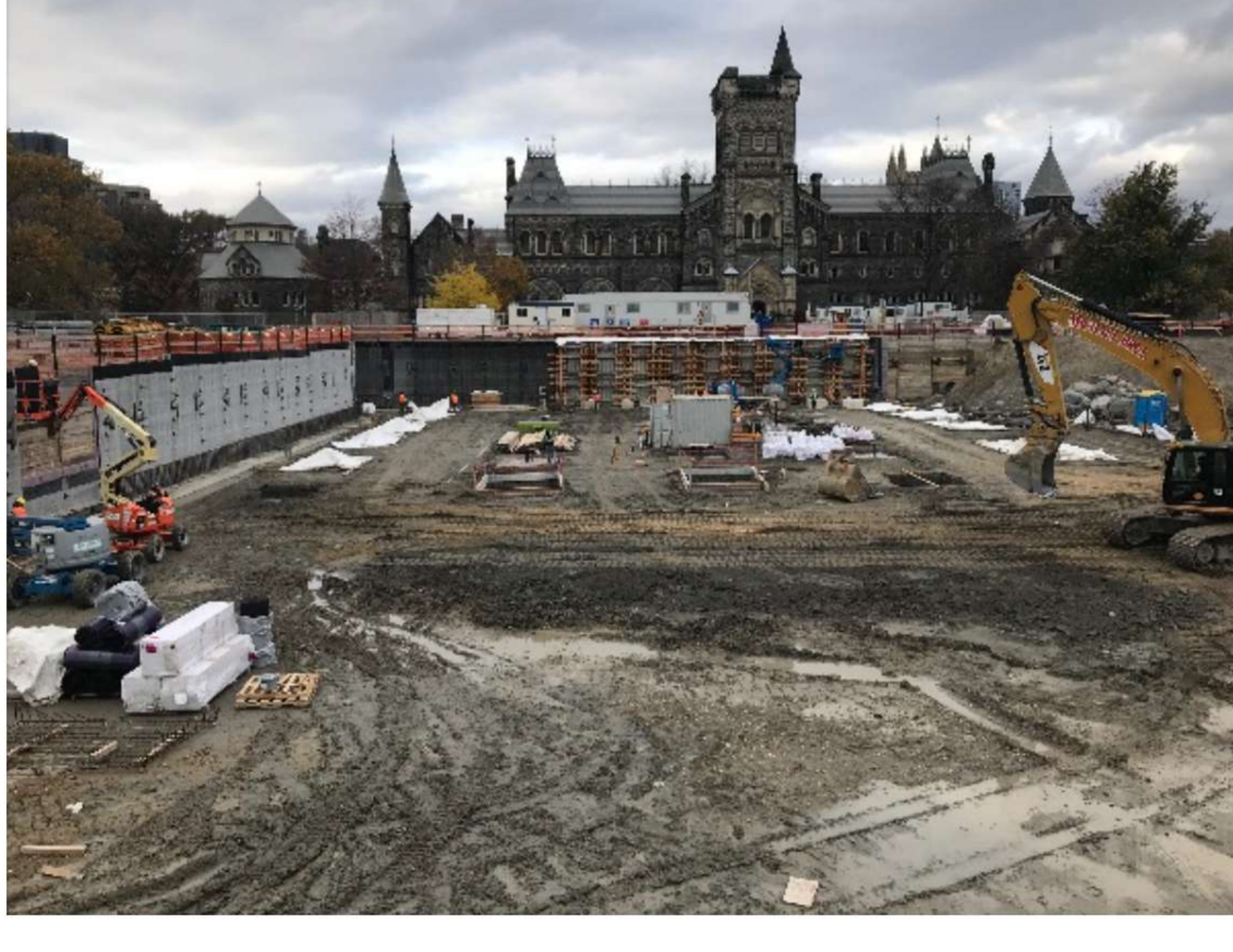
- The Back Campus, Whitney Walk and Tower Road areas are open for public access. Softscape planting and lawn works are on hold in the winter months and will commence again in the spring. We will continue hardscape works on West Tower Road as weather permits. The asphalt driveway on Laidlaw Lane is complete.
- Over at Hart House, the east road entrance is open for pedestrian and bicycle traffic. New waterproofing of the foundation was installed in the Observatory and hard landscaping continues around its perimeter.
- At the Medical Sciences Building (MSB), the upper terrace is open to the public and the planting is complete. On the east side of the MSB, structural repairs are underway including work to the ceiling and installation of geofoam, which ensures we do not overload the tunnel below with too much soil. Over the coming weeks, and as weather permits, we will continue hardscape work on the east side of MSB out to Queen's Park.

- If you're on campus, keep an eye out for new benches being installed in the completed areas.

That's it for 2021, folks. As per usual, please see progress photos below. Thank you again for your support over 2021 and here's to a happy and healthy 2022.

Kind regards,

Scott Mabury
Vice-President, Operations and Real Estate Partnerships



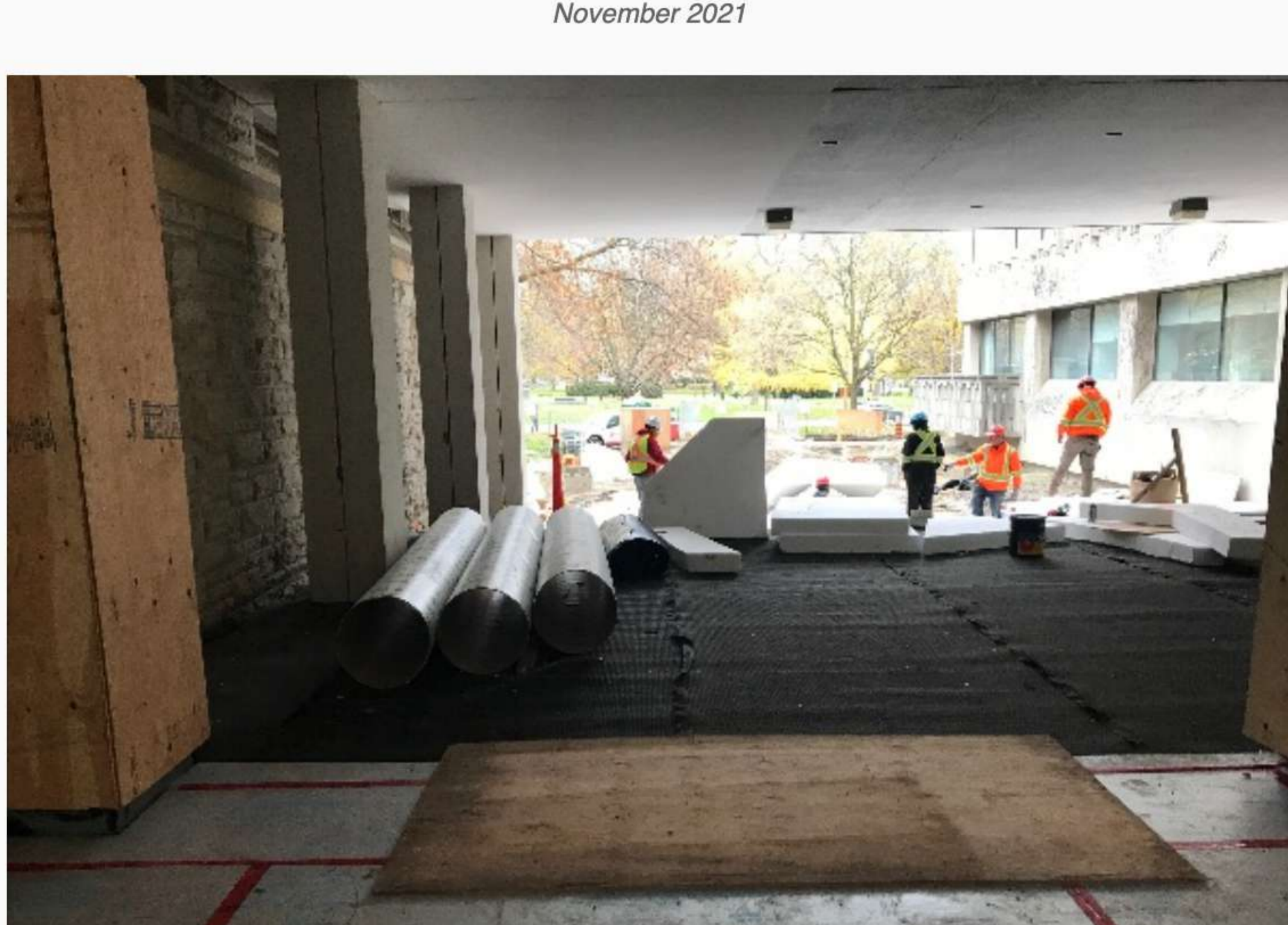
View of King's College Circle - November 2021



KCC - November 2021



November 2021



Medical Sciences Building - November 2021



Keep an eye out for new benches!