

LANDMARK CONSTRUCTION UPDATES



Dear U of T community member:

A warm welcome back to all of you on campus! Hopefully, you've been able to see firsthand some of the amazing progress we've made over the past year and a half.

Site servicing continues around the east and south side of King's College Circle (KCC). As per usual, we appreciate your patience during our road closures as we complete this necessary work. Excavation inside the circle has removed over 4300 truckloads of soil from site to-date.

In several buildings around KCC, we are busy re-routing fibre lines as part of an overall fibre re-route project. This project will eventually enable us to demolish part of the legacy service tunnel at the north-east corner of KCC and make way for the Landmark parking garage drive entrance ramp.

Other updates include:

- On Back Campus, Whitney Walk is now complete and open to the public. Landscaping around Whitney Walk will continue into October. Work on the Tower Road is finished and drive access to Wycliffe College is open as well as pedestrian access to Hart House. In the next phase of Tower Road work, located on the west side, we'll be working on a seatwall and more green space.
- At Hart House, the concrete paver installation on the east side is complete. We have started granite installation in the north-east corner of Hart House. The Observatory is undergoing some remediation work, with new waterproofing being installed before we continue with the construction of the new granite paver patio to the west.
- Over at the Medical Sciences Building (MSB), on the upper terrace, we have completed our concrete paving and opened the area to the public. On the east side of the MSB, we continue with structural repairs to the existing canopy columns. We also are continuing our landscaping work on the east side of the MSB, which extends to Queen's Park Crescent West.

Finally, I invite you to view the specially commissioned [temporary art installation](#) outside of Hart House, featuring mural-sized works by Indigenous artists and their collaborators. The temporary public art project is designed to set the stage for the [Indigenous Landscape project](#), which is being created alongside the Landmark Project on the St. George campus and is set to begin construction next year.

Welcome back everyone!

Kind regards,

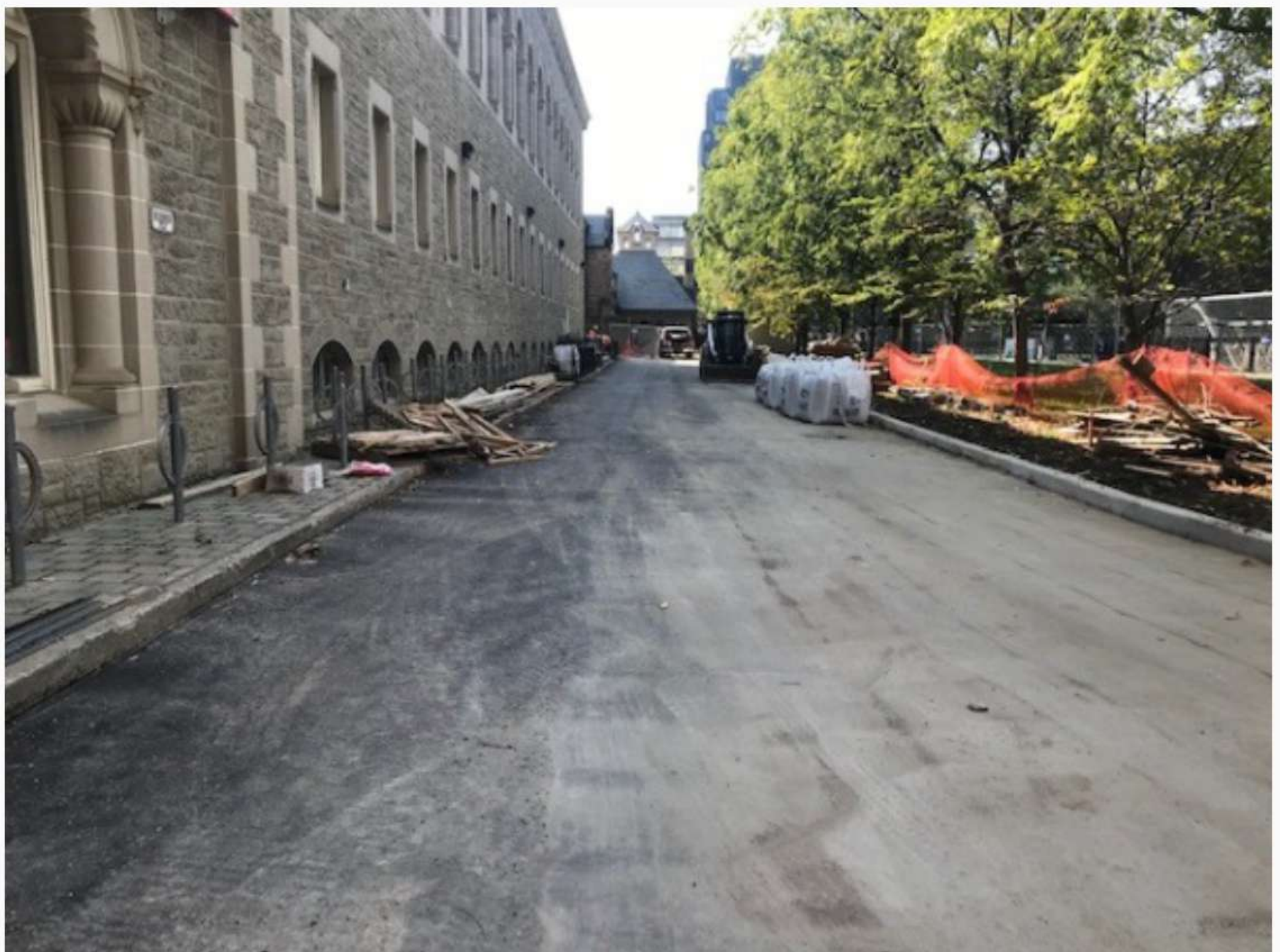
Scott Mabury
Vice-President, Operations and Real Estate Partnerships



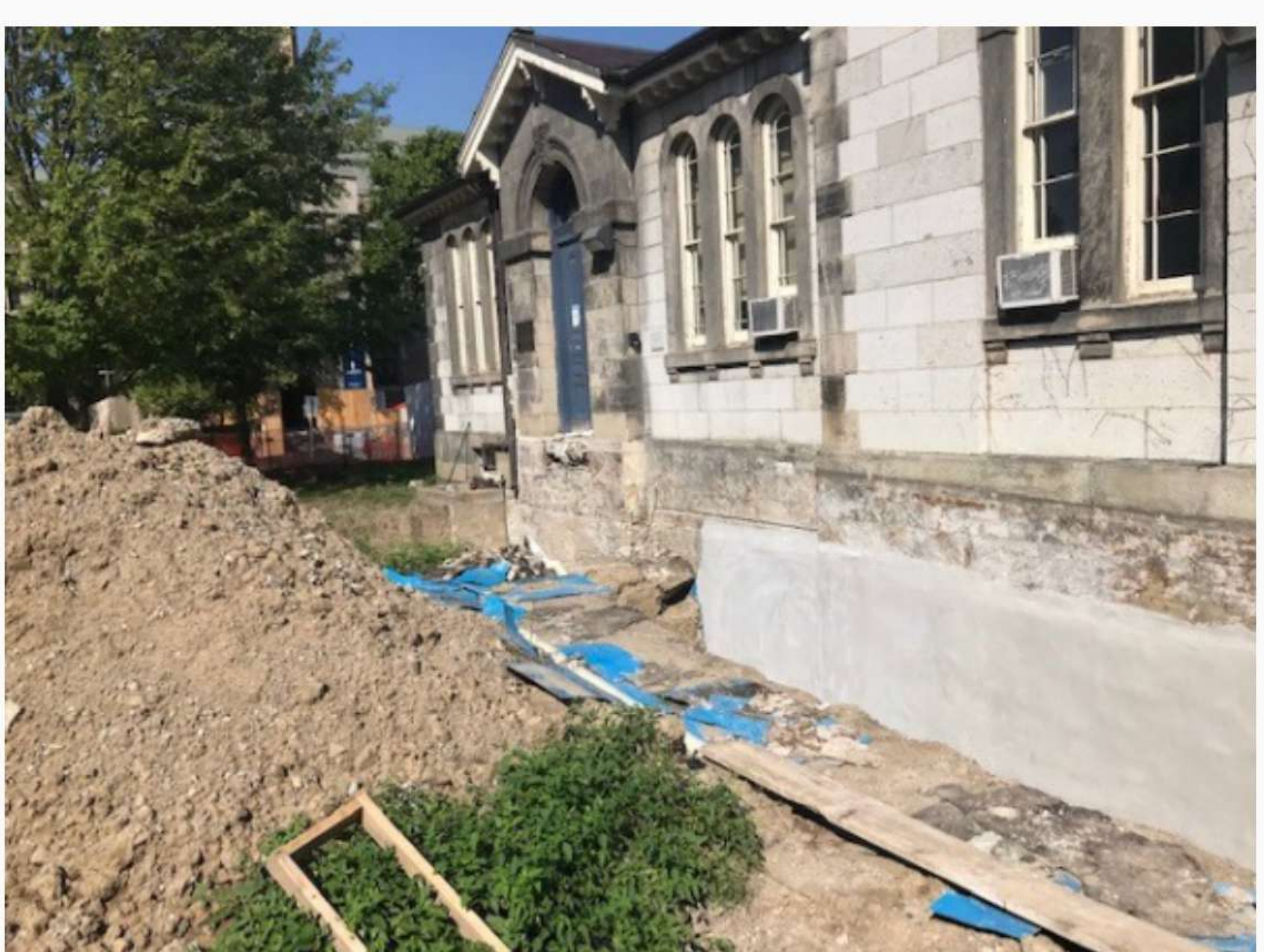
View of King's College Circle - September 2021



KCC excavation - September 2021



Laidlaw Lane - September 2021



Observatory - September 2021