

## LANDMARK CONSTRUCTION UPDATES



Dear U of T community member:

As August draws to a close, you'll notice we've begun major site servicing that requires road closures on the east side of King's College Circle (KCC). We'll try to keep these closures as brief as possible. Site servicing includes everything from landscaping to excavation – we've removed over 2,200 truckloads of soil from the site to-date. We appreciate your patience as we complete this necessary work.

You may have also noticed that we have de-mobilized our two shoring rigs at KCC. These rigs have done their duty – completing over 150 piles (long, cylinder supports) out of the 203 required. We've only got two more areas of piles to finish but we need to do some re-routing to make that happen.

We've begun re-routing the fibre lines inside some buildings on campus, which is part of an overall fibre re-route project. This will eventually allow us to demolish part of the existing service tunnel at the north-east corner of KCC to make way for the Landmark parking garage drive entrance ramp.

Other updates include:

- On Back Campus, the Whitney Walk granite is nearly complete and will open to the public September 7. Work, such as soft landscaping, will also continue around Whitney Walk in September. Tower Road tunnel remediation work is finished and we have poured the concrete base on top of the tunnel, which will serve as a solid base for the future granite paver surface. Laidlaw Lane grading is nearly done and asphalt will be completed in August.
- At Hart House, the concrete paver installation on the east side is nearly done. We have also completed a significant concrete pour near the Observatory, and will continue with concrete pours along the north-east corner of the Hart House circle. We will begin granite installation shortly in this area. The Observatory is getting some remediation work done, with new waterproofing being installed before we continue with construction of the new granite paver patio on the west side.
- At the Medical Sciences Building, on the upper terrace, we have completed the waterproofing membrane work and have begun laying the foundation granular for the concrete pavers, which will match the concrete pavers installed on Hart House's east side. On the east side of the Medical Sciences Building, we continue with structural repairs to the existing canopy columns. These columns will be receiving new pre-cast cladding in September.

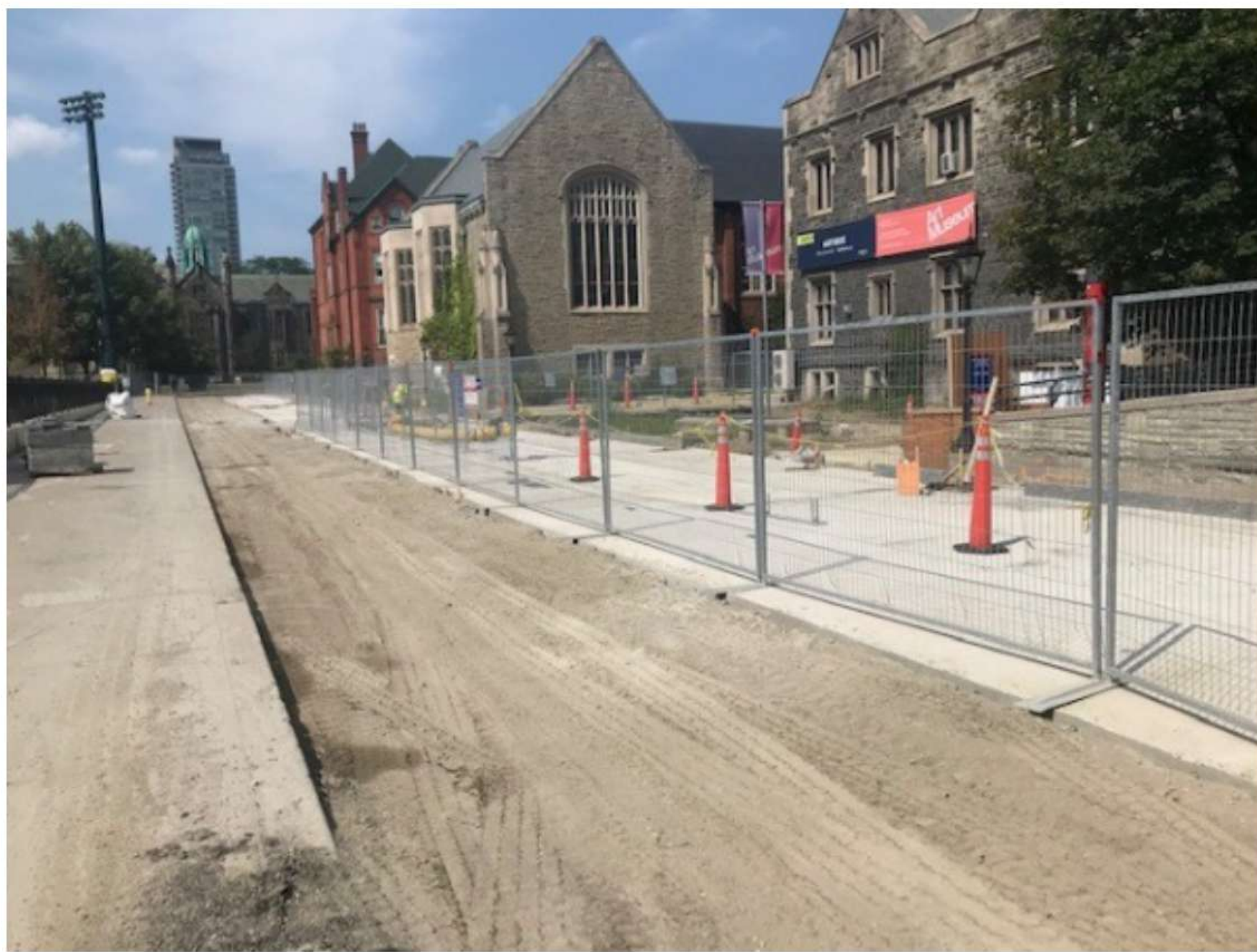
Please see below for more progress photos. Hope everyone is having a safe and healthy summer!

Best,

Scott Mabury  
Vice-President, Operations and Real Estate Partnerships



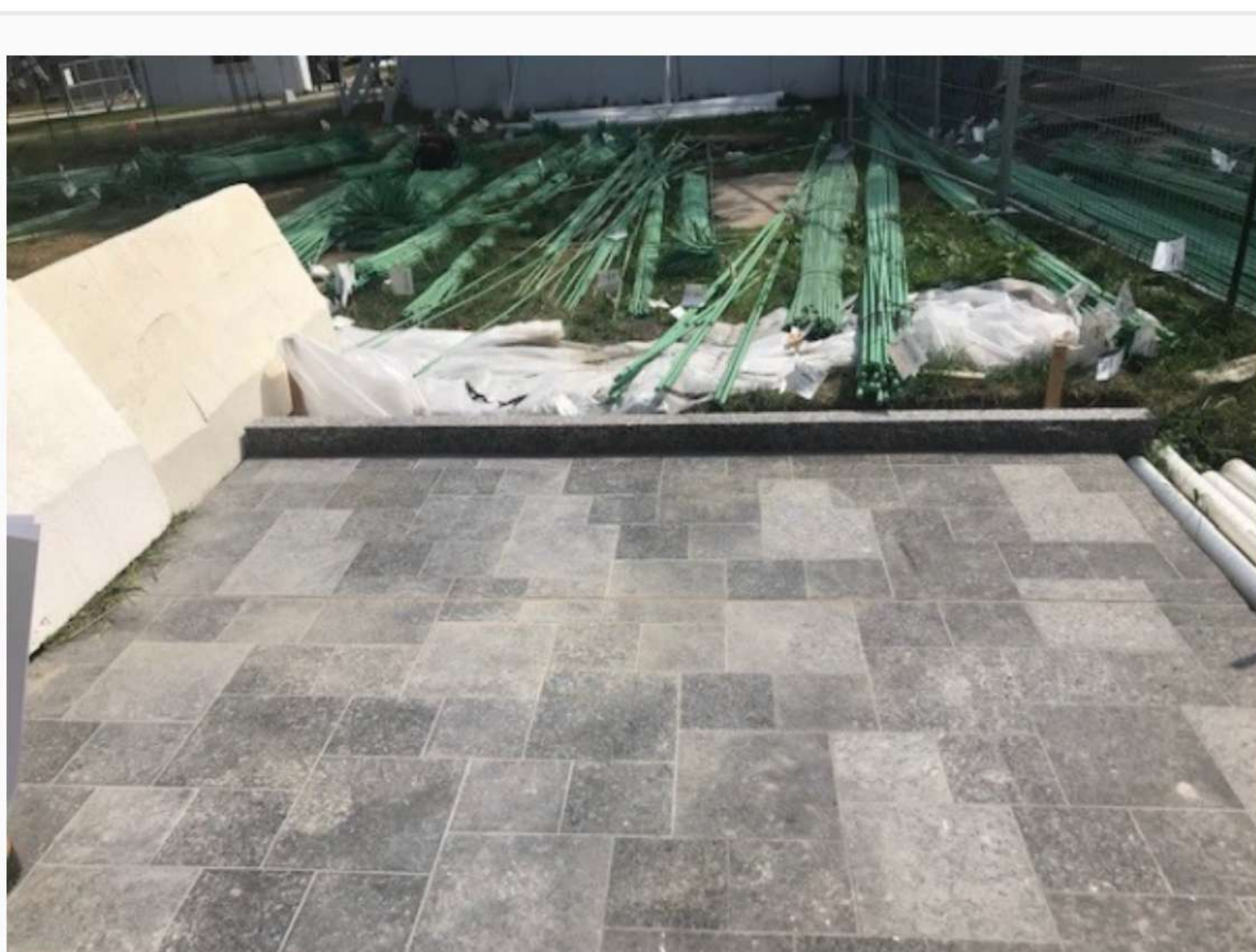
*View of King's College Circle - August 2021*



*Tower Road - August 2021*



*Hart House - August 2021*



*Granite paving mock-up - August 2021*



*Medical Sciences Building column repairing - August 2021*